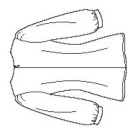
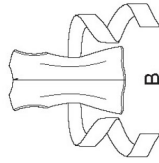


# S8921

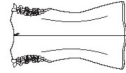
11 PIECES/PIEZAS



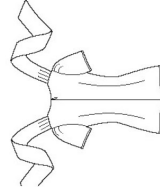
A



B



C



D

## MISSES' TOPS

**Fabrics:** Chambray, Cotton Lawn, Cotton Types, Gingham, lightweight Linen Types, Shirtings, Silky Types. Extra fabric needed to match plaids, stripes or one-way design fabrics.

**Notions:** Thread, one 22" invisible zipper. **B,C:** One pkg. of 1/2" wide single fold bias tape.

### BODY MEASUREMENTS (For Sizing Help Visit [www.simplicity.com/sizhelp](http://www.simplicity.com/sizhelp))

<b>Bust</b>	29½	30½	31½	32½	34	36	38	40	42	44	In
<b>Waist</b>	22	23	24	25	26½	28	30	32	34	37	"
<b>Hip-9" below waist</b>	31½	32½	33½	34½	36	38	40	42	44	46	"
<b>Back-neck to waist</b>	15¼	15½	15¾	16	16¼	16½	16¾	17	17¼	17¾	"
<b>Sizes</b>	4	6	8	10	12	14	16	18	20	22	
<b>European</b>	30	32	34	36	38	40	42	44	46	48	
<b>A,B,C,D Interfacing-</b>	½ yd. of 20" to 25" lightweight fusible, such as Pellon®										

<b>A Top</b>	1½	1¾	1¾	1¾	2	2½	2½	2½	2½	2½	2¾	Yd
45"***	1½	1½	1½	1½	1½	1½	1½	1½	1½	1¾	1¾	"
60"***	2½	2½	2½	2½	2½	2½	2½	2½	2½	2½	2¾	Yd
45"***	1½	1½	1½	1½	1½	1½	1½	1½	1½	1¾	1¾	"
60"***	1	1	1	1	1	1	1	1	1	1¼	1¼	"
<b>C Top</b>	1½	1¾	1¾	1¾	2	2½	2½	2½	2½	2½	2¾	Yd
45"***	1	1	1	1	1	1	1	1	1	1¼	1¼	"
60"***	2½	2½	2½	2½	2½	2½	2½	2½	2½	2½	2¾	Yd
45"***	1½	1½	1½	1½	1½	1½	1½	1½	1½	1¾	1¾	"
60"***	1	1	1	1	1	1	1	1	1	1¼	1¼	"

<b>D Top</b>	2½	2½	2½	2½	2½	2½	2½	2½	2½	2½	2¾	Yd
45"***	1½	1½	1½	1½	1½	1½	1½	1½	1½	1¾	1¾	"
60"***	34	35	36	37	38½	40½	42½	44½	46½	48½	In	

### FINISHED GARMENT MEASUREMENTS (Includes Design and Wearing Ease)

<b>A,B,C,D Bust</b>	34	35	36	37	38½	40½	42½	44½	46½	48½	In
<b>Finished back length from base of neck:</b>											
<b>A,B,C,D</b>	25¼	25½	25¾	26	26¼	26½	26¾	27	27¼	27½	In

\*\*without nap \*\*\*with or without nap

## JEUNE FEMME: HAUTS

**Tissus:** Chambray, Linon de Coton, Cottonnades, Vichy, Toile de Lin légère, Shirting, Tissus Soyeux. Prévoyez davantage de tissu pour raccorder les écosais, rayures ou motifs unidirectionnels.

**Mercerie:** Fil, une glissière invisible de 55cm. **B,C:** Un paquet de ruban simple de biais de 1.3cm de large.

### SEÑORITAS: BLUSAS

**Telas:** Chambray, Linón de Algodón, Mezclas de Algodones, Guingán, Tela de Lino ligera, Shirting, Telas Sedosas. Se necesita tela adicional para casar cuadros, rayas o telas estampadas en una dirección.

**Mercería:** Hilo, una cremallera invisible de 55cm. **B,C:** Un paquete de cinta de bias sencillo de 1.3cm de ancho.

### MESURES NORMALISÉES/MEDIDAS DEL CUERPO

<b>Poitrine/Busto</b>	75	78	80	83	87	92	97	102	107	112	cm
<b>Taille/Cintura</b>	56	58	61	64	67	71	76	81	87	94	"
<b>Hanches (23cm au-dessous de la taille)/Caderas (23cm abajo de la cintura)</b>	80	83	85	88	92	97	102	107	112	117	cm
<b>Dos (encolure à taille)/Espalda (escote a cintura)</b>	38.5	39.5	40	40.5	41.5	42	42.5	43	44	44	cm

<b>Tailles/Tallas</b>	4	6	8	10	12	14	16	18	20	22
<b>Françaises</b>	32	34	36	38	40	42	44	46	48	50
<b>Europees</b>	30	32	34	36	38	40	42	44	46	48

**A,B,C,D Entoilage-** 0.40m de 51cm à 64cm, léger, thermocollant tel que Pellon®  
**A,B,C,D Entre-tela-** 0.40m de 51cm a 64cm, ligera, adhesiva como Pellon®

### A Haut/A Blusa

115cm**	1.50	1.60	1.60	1.70	1.90	1.90	1.90	1.90	2.00	2.20	m
150cm**	1.30	1.40	1.40	1.40	1.40	1.40	1.40	1.40	1.50	1.60	"

### B Haut/B Blusa

115cm**	1.90	1.90	1.90	2.00	2.00	2.00	2.10	2.10	2.10	2.10	m
150cm**	1.30	1.40	1.40	1.40	1.60	1.60	1.60	1.60	1.60	1.60	"

### C Haut/C Blusa

115cm**	1.10	1.10	1.10	1.20	1.50	1.50	1.50	1.50	1.60	1.70	m
150cm**	0.90	0.90	0.90	0.90	1.00	1.00	1.10	1.10	1.20	1.20	"

### D Haut/D Blusa

115cm**	2.30	2.30	2.30	2.40	2.40	2.40	2.40	2.50	2.50	2.50	m
150cm**	1.70	1.80	1.80	1.80	1.80	1.80	1.80	1.80	1.90	1.90	2.00

\*sans sens \*\*avec sens \*\*\*avec ou sans sens \*\*sin pelusa \*\*\*con pelusa \*\*\*\*sin o con pelusa