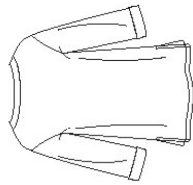
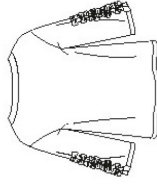


# S8920

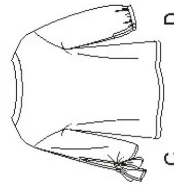
10 PIECES/PIEZAS



A



B



D

## MISSES' TOP WITH LENGTH AND SLEEVE VARIATIONS

Fabrics: Chambray, Cotton Types, Gauze, Linen Types, Shirtings. Extra fabric needed to match plaids, stripes or one-way design fabrics.

Notions: Thread. D: Two ½" buttons.

### BODY MEASUREMENTS (For Sizing Help Visit [www.simplicity.com/sizeshelp](http://www.simplicity.com/sizeshelp))

Bust	30½	31½	32½	34	36	38	40	42	44	46	In
Waist	23	24	25	26½	28	30	32	34	37	39	"
Hip-9" below waist	32½	33½	34½	36	38	40	42	44	46	48	In

Back-neck to waist	15½	15½	16	16½	16½	16½	17	17½	17½	17½	In
--------------------	-----	-----	----	-----	-----	-----	----	-----	-----	-----	----

Sizes	6	8	10	12	14	16	18	20	22	24	
European	32	34	36	38	40	42	44	46	48	50	

### A,B,C Interfacing- ¾ yd. of 20" to 25" lightweight fusible, such as Pellon®

A Top	1½	1½	1¾	1¾	1¾	1¾	1¾	1¾	2½	2½	Yd
45"***	1	1	1	1	1	1	1	1	1	1	"
60"***	1	1	1	1	1	1	1	1	1	1	"

B Top	1½	1½	1¾	1¾	1¾	1¾	1¾	1¾	2½	2½	Yd
45"***	1	1	1	1	1	1	1	1	1	1	"
60"***	1	1	1	1	1	1	1	1	1	1	"

C Top	2	2	2	2¾	2¾	2¾	2¾	2¾	2¾	2¾	Yd
45"***	1½	1½	1¾	1¾	1¾	1¾	1¾	1¾	1¾	1¾	"
60"***	1	1	1	1	1	1	1	1	1	1	"

D Top	1½	1½	1¾	1¾	1¾	1¾	1¾	1¾	2½	2½	Yd
45"***	1	1	1	1	1	1	1	1	1	1	"
60"***	1	1	1	1	1	1	1	1	1	1	"

### Interfacing- ½ yd. of 20" to 25" lightweight fusible, such as Pellon®

### FINISHED GARMENT MEASUREMENTS (Includes Design and Wearing Ease)

A,B,C,D Bust	37½	38½	39½	41	43	45	47	49	51	53	In
--------------	-----	-----	-----	----	----	----	----	----	----	----	----

### Finished back length from base of neck:

A	26½	26¾	27	27½	27¾	28	28½	28½	28¾	28¾	In
B,C,D	22½	22¾	23	23½	23¾	24	24½	24½	24¾	24¾	"

\*without nap \*\*with nap \*\*\*with or without nap

## JEUNE FEMME: HAUT AVEC DIFFÉRENTES LONGUEURS ET CHOIX DE MANCHES

Tissus: Chambray, Cotonnades, Gaze, Toile de Lin, Shirting. Prévoyez davantage de tissu pour raccorder les écussons, rayures ou motifs unidirectionnels.  
Mercerie: Fil. D: Deux boutons de 1,3cm.

### SEÑORITAS: BLUSA CON DIFERENTES LARGOS Y MANGAS

Telas: Chambray, Mezclas de Algodones, Gasa, Tela de Lino, Shirting. Se necesita tela adicional para casar cuadros, rayas o telas estampadas en una dirección.  
Mercería: Hilos. D: Dos botones de 1,3cm.

### MESURES NORMALISÉES/MEDIDAS DEL CUERPO

Poitrine/Busto	78	80	83	87	92	97	102	107	112	117	cm
Taille/Cintura	58	61	64	67	71	76	81	87	94	99	"
Hanches (23cm au-dessous de la taille)/Caderas (23cm abajo de la cintura)	83	85	88	92	97	102	107	112	117	122	cm
Dos (encolure á taille)/Espalda (escote a cintura)	39,5	40	40,5	41,5	42	42,5	43	44	44,5	45	cm

Tailles/Tallas	6	8	10	12	14	16	18	20	22	24	
Françaises	34	36	38	40	42	44	46	48	50	52	
Européas	32	34	36	38	40	42	44	46	48	50	

A,B,C Entoilage- 0.30m de 51cm à 64cm, léger, thermocollant tel que Pellon®  
A,B,C Entretela- 0.30m de 51cm à 64cm, légère, adhésive como Pellon®

### A Haut/A Blusa

115cm**	1.40	1.50	1.60	1.70	1.70	1.70	2.30	2.30	2.30	2.40	m
150cm**	1.40	1.50	1.50	1.50	1.50	1.50	1.50	1.50	1.50	1.80	"

### B Haut/B Blusa

115cm**	1.30	1.60	1.60	1.60	1.60	1.60	1.70	2.00	2.00	2.00	m
150cm**	1.20	1.20	1.30	1.30	1.30	1.30	1.30	1.40	1.40	1.50	"

### C Haut/C Blusa

115cm**	1.80	1.80	1.80	2.50	2.50	2.50	2.50	2.60	2.60	2.60	m
150cm**	1.60	1.60	1.60	1.60	1.60	1.60	1.70	1.70	1.70	1.70	"

### D Haut/D Blusa

115cm**	1.30	1.30	1.30	1.50	1.50	1.50	1.50	2.00	2.00	2.00	m
150cm**	1.20	1.20	1.20	1.20	1.20	1.20	1.30	1.30	1.30	1.50	"

Entoilage- 0.50m de 51cm à 64cm, léger, thermocollant tel que Pellon®  
Entretela- 0.50m de 51cm à 64cm, légère, adhésive como Pellon®

\*sans seris \*\*avec seris \*\*\*avec ou sans seris \*\*sin pelusa \*\*\*sin o con pelusa