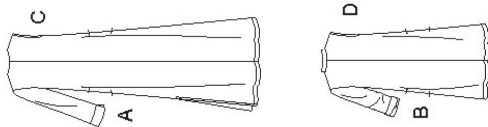


\$8912

10 PIECES/PIEZAS



MISSSES' DRESS IN TWO LENGTHS WITH NECKLINE AND SLEEVE VARIATIONS

Fabrics: Chambray, Cotton Types, Gauze, Lightweight Denim, Linen Types, Shirtings, Lightweight Twill. Extra fabric needed to match plaids, stripes or one-way design fabrics.

Notions: Thread. **A,B:** Two 1/2" buttons. **C,D:** One pkg. of 1/2" wide single fold bias tape.

BODY MEASUREMENTS (for Sizing Help Visit www.simplicity.com/sizehelp)

Bust	30½	31½	32½	34	36	38	40	42	44	46	In
Waist	23	24	25	26½	28	30	32	34	37	39	"
Hip-9" below waist	32½	33½	34½	36	38	40	42	44	46	48	In

Back-neck to waist	15½	15¾	16	16¼	16½	16¾	17	17¼	17½	17¾	In
Sizes	6	8	10	12	14	16	18	20	22	24	
European	32	34	36	38	40	42	44	46	48	50	

A,B,C,D Interfacing- ¾ yd. of 20" to 25" lightweight fusible, such as Pellom®

A Dress

45***	3½	3½	3½	3½	3½	3½	3½	3½	3½	4¼	4¼	Yd
60***	2½	2½	2½	2½	2½	2½	2½	2½	2½	3¼	3¼	"

B Dress

45***	2½	2½	2½	2½	2½	2½	2½	2½	2½	3	3¼	Yd
60***	2	2½	2½	2½	2½	2½	2½	2½	2½	2½	2½	"

Tie Belt- 2½ yd. of 1½" to 3¼" wide twill tape or cording

C Dress

45***	3¼	3½	3½	3½	3½	3½	3½	3½	3½	3½	3½	Yd
60***	1½	1½	1½	1½	1½	1½	1½	1½	1½	1½	1½	"

Applique- ¾ yd. of 2½" embroidered or Venice lace trim to cut apart

D Dress

45***	1¾	2½	2½	2½	2½	2½	2½	2½	2½	2½	2½	Yd
60***	1¾	1¼	1¼	1¼	1¼	1¼	1¼	1¼	1¼	1¼	1¼	"

FINISHED GARMENT MEASUREMENTS (Includes Design and Wearing Ease)

A,B,C,D Bust	36	37	38	39½	41½	43½	45½	47½	49½	51½	In
Finished back length from base of neck:											
A,C	55½	55¾	56	56¼	56½	56¾	57	57¼	57½	57¾	In
B,D	36½	36¾	37	37¼	37½	37¾	38	38¼	38½	38¾	"
B,D Width	40	41	42	43½	45½	47½	49½	51½	53½	55½	"

*without nap **with nap ***with or without nap

JEUNE FEMME: ROBE EN DEUX LONGUEURS AVEC CHOIX D'ENCOLURES ET DE MANCHES

Tissus: Chambray, Cotonnades, Gaze, Denim Léger, Toile de Lin, Shirting, Twill Légère. Prévoyez davantage de tissu pour raccorder les écosseas, rayures ou motifs unidirectionnels.

Mercerie: Fil. **A,B:** Deux boutons de 1.3cm. **C,D:** Un paquet de ruban simple de biais de 1.3cm de large.

SEÑORITAS: VESTIDO EN DOS LARGOS CON DIFERENTES ESCOTES Y MANGAS

Telas: Chambray, Mezclas de Algodones, Gasa, Drill Ligero, Tela de Lino, Shirting, Twill Ligera. Se necesita tela adicional para casar cuadros, rayas o telas estampadas en una dirección.

Mercería: Hilo. **A,B:** Dos botones de 1.3cm. **C,D:** Un paquete de cinta de bias sencillo de 1.3cm de ancho.

MESURES NORMALISÉES/MEDIDAS DEL CUERPO

Poitrine/Busto	78	80	83	87	92	97	102	107	112	117	cm
Taille/Cintura	58	61	64	67	71	76	81	87	94	99	"
Hanches (23cm au-dessous de la taille)/Caderas (23cm abajo de la cintura)	83	85	88	92	97	102	107	112	117	122	cm

Dos (encolure á taille)/Espalda (escote a cintura)

39.5	40	40.5	41.5	42	42.5	43	44	44	44.5	cm
------	----	------	------	----	------	----	----	----	------	----

Tailles/Tallas

6	8	10	12	14	16	18	20	22	24	
Françaises	34	36	38	40	42	44	46	48	50	52
Europeas	32	34	36	38	40	42	44	46	48	50

A,B,C,D Entoilage- 0.60m de 51cm á 64cm, léger, thermocollant tel que Pellom®

A,B,C,D Entreteila- 0.60m de 51cm á 64cm, ligera, adhesiva como Pellom®

A Robe/A Vestido

115cm**	3.10	3.20	3.20	3.20	3.20	3.20	3.20	3.20	3.50	3.90	3.90	m
150cm**	2.20	2.20	2.20	2.20	2.30	2.30	2.30	2.70	3.00	3.20	3.20	"

B Robe/B Vestido

115cm**	2.40	2.40	2.40	2.50	2.50	2.60	2.70	2.70	2.90	2.90	m
150cm**	1.90	1.90	1.90	1.90	1.90	1.90	1.90	2.00	2.30	2.40	"

Cinturon de Lazo- 2.20m de galón asargado o de cordoncillo de 1.3cm a 1.5cm de ancho

C Robe/C Vestido

115cm**	2.90	3.10	3.10	3.10	3.10	3.20	3.20	3.20	3.20	3.30	m
150cm**	1.70	1.70	1.70	1.90	1.90	2.00	2.40	2.90	3.00	3.00	"

Application- 0.70m de garniture de dentelle brodée ou de Venice à découper de 6.3cm de large/**Aplicación-** 0.70m de adorno de encaje bordado o de Venice para cortar aparte de 6.3cm de ancho

D Robe/D Vestido

115cm**	1.60	1.90	1.90	2.00	2.20	2.20	2.20	2.20	2.20	2.30	m
150cm**	1.20	1.20	1.20	1.40	1.40	1.40	1.50	1.50	1.60	2.00	"

*sans sens **avec sens ***avec ou sans sens *sin pelusa **com pelusa ***sin o con pelusa