

S9101

6 PIECES/PIEZAS

MISSES' PULLOVER DRESSES IN TWO LENGTHS

Fabrics: Challis, Chambray, Cotton, Cotton Blends, Gingham, Linen, Linen Blends, Shirtings, Silky Types. Extra fabric needed to match plaids, stripes or one-way design fabrics.

Notions: Thread, one pkg. of 1/2" wide single fold bias tape.

Sizes	XXS	XS	S	M	L	XL	XXL
	4	6-8	10-12	14-16	18-20	22-24	26
Sizes-European	30	32-34	36-38	40-42	44-46	48-50	52

A Dress								
45***	2 1/4	2 1/4	2 1/4	2 1/4	3 1/2	3 1/2	3 3/4	Yd *
60***	2 1/4	2 1/4	2 1/4	2 1/4	2 1/4	2 1/4	3	

B Dress								
45***	2 1/4	2 1/4	2 1/4	2 1/4	3 1/2	4 1/2	4 1/2	Yd *
60***	2 1/4	2 1/4	2 1/4	2 1/4	2 1/4	2 1/4	3	

C Dress								
45***	2 1/4	2 1/4	2 1/4	2 1/4	3	4 1/4	4 1/4	Yd *
60***	2 1/4	2 1/4	2 1/4	2 1/4	2 1/4	2 1/4	2 1/4	

FINISHED GARMENT MEASUREMENTS

A,B,C Bust	34 1/2	37	39 1/2	43 1/2	47 1/2	51 1/2	55 1/2	In
Finished back length from base of neck:								
A,B	45	45 1/2	46	46 1/2	47	47 1/2	48	In
C	38	38 1/2	39	39 1/2	40	40 1/2	41	*
A,B Width	53 1/2	56	58 1/2	62 1/2	66 1/2	70 1/2	74 1/2	*
C Width	50 1/2	53	55 1/2	59 1/2	61 1/2	65 1/2	69 1/2	*

JEUNE FEMME: ROBES PULLOVER EN DEUX LONGUEURS

SEÑORITAS: VESTIDOS PULLOVER EN DOS LARGOS

Tailles/ Tallas	TTP/XXP	TP/XP	P	M	G	TG/XG	TTG/XXG
	4	6-8	10-12	14-16	18-20	22-24	26
Françaises	32	34-36	38-40	42-44	46-48	50-52	54
Europeas	30	32-34	36-38	40-42	44-46	48-50	52

A Robe/ A Vestido								
115cm**	2.50	2.60	2.60	2.70	3.20	3.30	3.40	m
150cm**	2.50	2.50	2.50	2.60	2.60	2.70	2.70	*

B Robe/ B Vestido								
115cm**	2.50	2.60	2.60	2.60	3.20	4.10	4.20	m
150cm**	2.40	2.40	2.50	2.50	2.50	2.70	2.70	*

C Robe/ C Vestido								
115cm**	2.20	2.20	2.20	2.30	2.70	3.80	3.90	m
150cm**	2.10	2.10	2.10	2.10	2.20	2.30	2.30	*

*without nap **with nap ***with or without nap *sans seins **avec seins ***avec ou sans seins
*sin pelusa **con pelusa ***sin o con pelusa

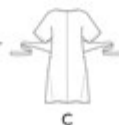
Instrucciones de costura en Español en el Interior del Patrón.



A



B



C