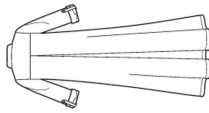


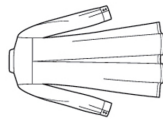
S8983

13 PIECES/PIEZAS

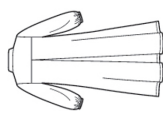
Medidas e Instrucciones de costura en Español en el Interior del Patrón.



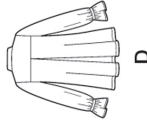
A



B



C



D

MISSES' DRESSES

Fabrics: Lightweight to medium-weight fabrics such as: Chambray, Cotton Lawn, Cotton Types, Crepe, Crepe de Chine, Double Georgette, Linen Types, Shirtings, Silky Types, Voile. Extra fabric needed to match plaids, stripes or one-way design fabrics.

Notions: Thread. **A:** Nine $\frac{3}{8}$ " buttons. **B:** Seven $\frac{3}{8}$ " buttons. **C:** $\frac{1}{4}$ yd. of $\frac{1}{4}$ " wide elastic. **C, D:** Three $\frac{3}{8}$ " buttons.

BODY MEASUREMENTS (For Sizing Help Visit www.simplicity.com/sizelhelp)

Bust	30½	31½	32½	34	36	38	40	42	44	In
Waist	23	24	25	26½	28	30	32	34	37	"
Hip-9" below waist	32½	33½	34½	36	38	40	42	44	46	In
Back-neck to waist	15½	15¾	16	16¼	16½	16¾	17	17¼	17½	In
Sizes	6	8	10	12	14	16	18	20	22	
European	32	34	36	38	40	42	44	46	48	

A, B, C, D Interfacing- $\frac{3}{4}$ yd. of 20" to 25" lightweight fusible, such as Pellon®

A Dress

45***	3½	3%	3%	3%	3%	3%	3%	3%	3%	3%	3%	3%	3%	3%	Yd
60***	3	3	3	3	3	3	3	3	3	3	3	3	3	3	"

B Dress

45***	2½	2%	2%	2%	2%	2%	2%	2%	2%	2%	2%	2%	2%	2%	Yd
60***	2¼	2¼	2½	2½	2½	2½	2½	2½	2½	2½	2½	2½	2½	2½	"

C Dress

45***	2½	2%	2%	2%	2%	2%	2%	2%	2%	2%	2%	2%	2%	2%	Yd
60***	2¼	2¼	2½	2½	2½	2½	2½	2½	2½	2½	2½	2½	2½	2½	"

D Dress

45***	2½	2%	2%	2%	2%	2%	2%	2%	2%	2%	2%	2%	2%	2%	Yd
60***	1½	1¼	1¾	1¾	1¾	1¾	1¾	1¾	1¾	1¾	1¾	1¾	1¾	1¾	"

FINISHED GARMENT MEASUREMENTS (Includes Design and Wearing Ease)

A, B, C, D Bust	35	36	37	38½	40½	42½	44½	46½	48½	In
------------------------	----	----	----	-----	-----	-----	-----	-----	-----	----

Finished back length from base of neck:

A	49½	49¾	50	50¼	50½	50¾	51	51¼	51½	In
B, C	37½	37¾	38	38¼	38½	38¾	39	39¼	39½	"
D	25½	25¾	26	26¼	26½	26¾	27	27¼	27½	"
A Width	68½	69½	70½	72	74	76	77	78	80	"
B, C Width	59½	60½	61½	63	65	67	69	71	73	"
D Width	50½	51½	52½	54	56	58	60	62	64	"

*without nap **with nap ***with or without nap

JEUNE FEMME: ROBES

Tissus: Tissus légers à moyens tels que: Chambray, Linon de Coton, Cotonnades, Crépe, Crépe de Chine, Crépe Georgette Double, Toile de Lin, Shirting, Tissus Soyeux, Voile. Prévoyez davantage de tissu pour raccorder les échantillons, rayures ou motifs unidirectionnels.

Mercerie: Fil. **A:** Neuf boutons de 1.5cm. **B:** Sept boutons de 1.5cm. **C:** 0.80m d'élastique de 6mm de large. **C, D:** Trois boutons de 1.5cm.

MESURES NORMALISÉES

Poitrine	78	80	83	87	92	97	102	107	112	cm
Taille	58	61	64	67	71	76	81	87	94	"
Hanches (23cm au-dessous de la taille)	83	85	88	92	97	102	107	112	117	cm
Dos (encolure à taille)	39.5	40	40.5	41.5	42	42.5	43	44	44	cm
Tailles	6	8	10	12	14	16	18	20	22	
Françaises	34	36	38	40	42	44	46	48	50	

A, B, C, D Entoilage- 0.70m de 51cm à 64cm, léger, thermocollant tel que Pellon®

A Robe

115cm**	3.20	3.30	3.30	3.30	3.30	3.30	3.30	3.40	3.40	3.40	m
150cm**	2.70	2.70	2.70	2.70	2.70	2.80	2.80	2.80	2.80	2.80	"

B Robe

115cm**	2.60	2.70	2.70	2.70	2.70	2.70	2.70	2.70	2.80	2.80	m
150cm**	2.10	2.10	2.10	2.10	2.10	2.10	2.10	2.20	2.20	2.20	"

C Robe

115cm**	2.60	2.60	2.60	2.60	2.60	2.60	2.60	2.70	3.00	3.10	m
150cm**	2.10	2.10	2.10	2.10	2.10	2.10	2.10	2.20	2.20	2.20	"

D Robe

115cm**	2.10	2.10	2.10	2.30	2.50	2.60	2.70	2.70	2.70	2.70	m
150cm**	1.50	1.50	1.60	1.60	1.60	1.60	1.70	1.80	1.90	2.00	"

MESURES DES VÊTEMENTS FINIS

A, B, C, D Poitrine	89	91.5	94	98	103	108	113	118	123	cm
----------------------------	----	------	----	----	-----	-----	-----	-----	-----	----

Longueur finie du dessous la base du cou:

A	126	126	127	127	128	129	130	130	131	cm
B, C	95	96	96.5	97	98	98.5	99	100	100.5	"
D	65	65.5	66	66.5	67.5	68	68.5	69	70	"
A Largeur	175	177	179	183	188	193	196	199	204	"
B, C Largeur	151	154	156	160	165	171	176	181	186	"
D Largeur	128	131	133	138	143	148	153	158	163	"

*sans sens **avec sens ***avec ou sans sens