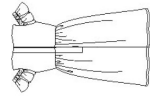
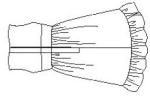


S8903

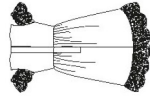
9 PIECES



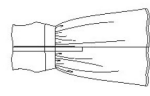
A



B



C



D

18" DOLL CLOTHES

Fabrics: Broadcloth, Calico, Challis, Cotton Types, Gauze, Jersey, Linen Types.

A Bodice and Sleeves- ¼ yd. of 45" or 60"***

Skirt- ¾ yd. of 45" or 60"***

Lining- ¼ yd. of 45"*

Notions: ¾ yd. of ½" wide hook and loop tape, ¾ yd. of ¼" wide elastic

B Bodice- ¼ yd. of 45" or 60"***

Skirt- ½ yd. of 45" or 60"***

Lining- ¼ yd. of 45"*

Notions: ¾ yd. of ½" wide hook and loop tape, one pkg. of ¾" wide single fold bias tape

C Dress- ¾ yd. of 45" or 60"***

Lining- ¼ yd. of 45"*

Sleeve and Skirt Ruffle- 2½ yd. of 2" to 3" wide scalloped flat lace

Notions: ¾ yd. of ½" wide hook and loop tape, ¾ yd. of ¼" wide elastic

D Bodice- ¼ yd. of 45" or 60"***

Skirt- ¾ yd. of 45" or 60"***

Lining- ¼ yd. of 45"*

Notions: ¾ yd. of ½" wide hook and loop tape, one pkg. of ¾" wide single fold bias tape

*without nap **with nap ***with or without nap

VÊTEMENTS POUR POUPEES DE 45.5CM

Tissus: Popeline, Calicot, Étamine, Cotonnades, Gaze, Jersey fin, Toile de Lin.

A Corsage et Manches- 0.30m de 115cm ou 150cm***

Jupe- 0.40m de 115cm ou 150cm**

Doublure- 0.30m de 115cm*

Mercerie: 0.30m de fermeture agrippante de 1.3cm de large, 0.30m d'élastique de 6mm de large

B Corsage- 0.30m de 115cm ou 150cm**

Jupe- 0.40m de 115cm ou 150cm**

Doublure- 0.30m de 115cm*

Mercerie: 0.30m de fermeture agrippante de 1.3cm de large, un paquet de ruban simple de biais de 2.2cm de large

C Robe- 0.40m de 115cm ou 150cm**

Doublure- 0.30m de 115cm*

Manche et Volant de la jupe- 1.90m de festonnée dentelle plate de 5cm à 7.5cm de large

Mercerie: 0.30m de fermeture agrippante de 1.3cm de large, 0.30m d'élastique de 6mm de large

D Corsage- 0.30m de 115cm ou 150cm**

Jupe- 0.40m de 115cm ou 150cm**

Doublure- 0.30m de 115cm*

Mercerie: 0.30m de fermeture agrippante de 1.3cm de large, un paquet de ruban simple de biais de 2.2cm de large

*SANS SEINS **AVEC SEINS ***AVEC OU SANS SEINS