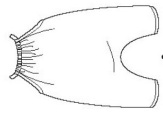
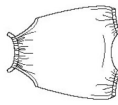


S8894

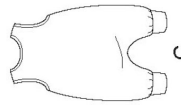
15 PIECES/PIEZAS



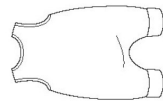
A



B



C



D

BABIES' KNIT ROMPERS

Fabrics: Sized for stretch knits only: Interlock, Jersey, Single Knit, Stretch Velvet. See Pick-A-Knit® Rule. Not suitable for sleepwear. Extra fabric needed to match plaids, stripes or one-way design fabrics.

Notions: Thread. **B:** ¾ yd. of ¼" wide elastic. **C, D:** Two ¾" buttons.

BODY MEASUREMENTS

Weight	-7	7-13	13-18	18-21	21-24	lbs.
Height	-17	17-24	24-26½	26½-31	31-34	In
Sizes	XXS	XS	S	M	L	
	—	1-3	6	12	18	

A Romper

60"***	1	1	1	1½	1½	Yd
--------	---	---	---	----	----	----

B Romper

60"***	1	1	1	1½	1½	Yd
--------	---	---	---	----	----	----

C Romper

60"***	¾	1	1	1	1½	Yd
--------	---	---	---	---	----	----

C, D Interfacing- ¾ yd. of 20" to 25" lightweight fusible, such as Pellon®

D Romper

60"***	1	1	1	1½	1½	Yd
--------	---	---	---	----	----	----

FINISHED GARMENT MEASUREMENTS

Finished back length from base of neck:

A	17	19	21	23	25	In
B	14½	15½	16½	17½	18½	"
C, D	17½	19½	21½	23½	25½	"

*without nap **with nap ***with or without nap

BÉBÉS: SALOPETTES EN JERSEY

Tissus: En Jerseys extensibles seulement: Jersey Interlock, Jersey fin, Jersey Simple, Velours Extensible. Voyez la Règle pour Choisir un Jersey®. Ces modèles ne conviennent pas pour vêtements de nuit. Prévoyez davantage de tissu pour raccorder les écosais, les rayures ou les motifs unidirectionnels.

Merciérie: Fil. **B:** 0.70m d'élastique de 6mm de large. **C, D:** Deux boutons de 2cm.

BEBÉS: MAMELUCOS EN MALLAS

Telas: En Mallas estirables solamente: Mallas Interlock, Mallas finas, Mallas Sencillas, Terciopelo Estirable. Vea la Regla para Escoger Mallas®. Estos modelos no convienen para ropa de dormir. Se necesita tela adicional para casar cuadros, rayas o telas estampadas en una dirección.

Merciéria: Hilo. **B:** 0.70m de elástico de 6mm de ancho. **C, D:** Dos botones de 2cm.

MESURES NORMALISÉES/MEDIDAS DEL CUERPO

Poids/Peso	-3	3-6 kg	6-8 kg	8-9.5	9.5-11	kg
Hauteur/Altura	-43	43-61	61-67	67-79	79-87	cm
Tailles/Tallas	—	1-3	6	12	18	
		TTP/XXP	TP/XP	P/P	M/M	G/G

A Salopette/A Mameluco

150cm**	0.90	0.90	1.00	1.00	1.00	m
---------	------	------	------	------	------	---

B Salopette/B Mameluco

150cm**	0.90	0.90	1.00	1.00	1.00	m
---------	------	------	------	------	------	---

C Salopette/C Mameluco

150cm**	0.80	0.90	0.90	0.90	1.00	m
---------	------	------	------	------	------	---

C, D Entoilage- 0.60m de 51cm à 64cm, léger, thermocollant tel que Pellon®

C, D Entretela- 0.60m de 51cm a 64cm, ligera, adhesiva como Pellon®

D Salopette/D Mameluco

150cm**	0.90	0.90	1.00	1.00	1.10	m
---------	------	------	------	------	------	---

*sans sens **avec sens ***avec ou sans sens

*sin pelusa **com pelusa ***sin o com pelusa