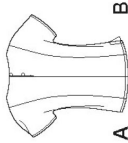


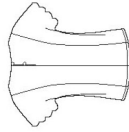
# S8883

## 15 PIECES/PIEZAS

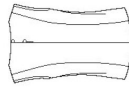
Medidas e instrucciones de costura en Español en el interior del Patron.



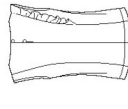
A



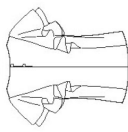
B



C



D



E



F

### MISSES' TOPS WITH NECKLINE VARIATIONS...SEPARATE PATTERN PIECES INCLUDED FOR B,C,D,DD CUP SIZES

Fabrics: Batiks, Chambray, Cotton Types, Gingham, Linen Types, Sateen, Shirtings, Silky Types. Extra fabric needed to match plaids, stripes or one-way design fabrics.

Notions: Thread, one 4" length of elastic cord, two 1/2" buttons. A: 1 1/2 yd. of 1/2" wide cording. B: 3/4 yd. of 1 1/2" wide flat lace, 1/4 yd. of mini pom-pom fringe. D,E: One pkg. of 1/2" wide single fold bias tape.

#### BODY MEASUREMENTS (For Sizing Help Visit [www.simplicity.com/sizehelp](http://www.simplicity.com/sizehelp))

Bust	30 1/2	31 1/2	32 1/2	34	36	38	40	42	44	46	48	50
Waist	23	24	25	26 1/2	28	30	32	34	37	39		
Hip-9" below waist	32 1/2	33 1/2	34 1/2	36	38	40	42	44	46	48	50	
Back-neck to waist	15 1/2	15 3/4	16	16 1/4	16 1/2	16 3/4	17	17 1/4	17 1/2	17 3/4		
Sizes	6	8	10	12	14	16	18	20	22	24		
European	32	34	36	38	40	42	44	46	48	50		

#### A,B Top

45***	1 1/2	1 1/2	1 1/2	1 1/2	1 1/2	1 1/2	1 1/2	1 1/2	1 1/2	1 1/2	1 1/2	1 1/2
60***	1	1	1	1	1	1	1	1	1	1	1	1

Interfacing- 3/4 yd. of 20" to 25" lightweight fusible, such as Pellon®

#### C Top

45***	1 1/2	1 1/2	1 1/2	1 1/2	1 1/2	1 1/2	1 1/2	1 1/2	1 1/2	1 1/2	1 1/2	1 1/2
60***	1	1	1	1	1	1	1	1	1	1	1	1

Interfacing- 3/4 yd. of 20" to 25" lightweight fusible, such as Pellon®

#### D Top

45***	1 1/2	1 1/2	1 1/2	1 1/2	1 1/2	1 1/2	1 1/2	1 1/2	1 1/2	1 1/2	1 1/2	1 1/2
60***	1	1	1	1	1	1	1	1	1	1	1	1

D,E,F Interfacing- 3/4 yd. of 20" to 25" lightweight fusible, such as Pellon®

#### E Top

45***	1 1/2	1 1/2	1 1/2	1 1/2	1 1/2	1 1/2	1 1/2	1 1/2	1 1/2	1 1/2	1 1/2	1 1/2
60***	1	1	1	1	1	1	1	1	1	1	1	1

#### F Top

45***	2 1/2	2 1/2	2 1/2	2 1/2	2 1/2	2 1/2	2 1/2	2 1/2	2 1/2	2 1/2	2 1/2	2 1/2
60***	1 1/2	1 1/2	1 1/2	1 1/2	1 1/2	1 1/2	1 1/2	1 1/2	1 1/2	1 1/2	1 1/2	1 1/2

#### FINISHED GARMENT MEASUREMENTS (Includes Design and Wearing Ease)

B Cup	36 1/2	37 1/2	38 1/2	40	42	44	46	48	50	52	54	56
C Cup	37	38	39	40 1/2	42 1/2	44 1/2	46 1/2	48 1/2	50 1/2	52 1/2	54 1/2	56 1/2
D Cup	37 1/2	38 1/2	39 1/2	41	43	45	47	49	51	53	55	57
DD Cup	38	39	40	41 1/2	43 1/2	45 1/2	47 1/2	49 1/2	51 1/2	53 1/2	55 1/2	57 1/2
B Cup	35 1/2	36 1/2	37 1/2	39	41	43	45	47	49	51	53	55
C Cup	36	37	38	39 1/2	41 1/2	43 1/2	45 1/2	47 1/2	49 1/2	51 1/2	53 1/2	55 1/2
D Cup	36 1/2	37 1/2	38 1/2	40	42	44	46	48	50	52	54	56
DD Cup	37	38	39	40 1/2	42 1/2	44 1/2	46 1/2	48 1/2	50 1/2	52 1/2	54 1/2	56 1/2

\*\*without nap \*\*\*with or without nap

### JEUNE FEMME: HAUTS AVEC CHOIX D'ENCOLURES...PIÈCES DE PATRON SÉPARÉES INCLUSES POUR LES BONNETS B,C,D,DD

Tissus: Batiks, Chambray, Cotonnades, Vichy, Toile de Lin, Satinette, Shirting, Tissus Soyeux. Prévoyez davantage de tissu pour raccorder les épaules, rayures ou motifs unidirectionnels.

Mercurerie: Fil, un morceau de cordon élastique de 10cm de long, deux boutons de 1.3cm. A: 1.20m de cordon de 3mm de large. B: 0.60m de dentelle plate de 3.8cm de large. 0.60m de mini frange de pompons. D,E: Un paquet de ruban de biais simple de 1.3cm de large.

#### MESURES NORMALISEES

Poitrine	78	80	83	87	92	97	102	107	112	117	122	127
Taille	58	61	64	67	71	76	81	87	94	99		
Hanches (23cm au-dessous de la taille)	83	85	88	92	97	102	107	112	117	122	127	132
Dos (encolure à taille)	39.5	40	40.5	41.5	42	42.5	43	44	44	44.5		
Tailles	6	8	10	12	14	16	18	20	22	24		
Françaises	34	36	38	40	42	44	46	48	50	52		

#### A,B Haut

115cm**	1.30	1.30	1.30	1.30	1.30	1.30	1.30	1.40	1.40	1.40	1.40	1.60
150cm**	1.20	1.20	1.20	1.30	1.30	1.30	1.30	1.30	1.30	1.30	1.40	1.40

Entoilage- 0.60m de 51cm à 64cm, léger, thermocollant tel que Pellon®

#### C Haut

115cm**	1.40	1.40	1.40	1.40	1.40	1.40	1.40	1.50	1.50	1.70	1.70	1.70
150cm**	1.20	1.20	1.20	1.30	1.30	1.30	1.30	1.30	1.30	1.30	1.40	1.40

Entoilage- 0.70m de 51cm à 64cm, léger, thermocollant tel que Pellon®

#### D Haut

115cm**	1.30	1.30	1.30	1.40	1.40	1.40	1.40	1.40	1.40	1.40	1.40	1.40
150cm**	0.90	0.90	0.90	0.90	0.90	0.90	0.90	0.90	0.90	1.20	1.20	1.20

D,E,F Entoilage- 0.40m de 51cm à 64cm, léger, thermocollant tel que Pellon®

#### E Haut

115cm**	1.30	1.30	1.30	1.40	1.40	1.40	1.40	1.40	1.40	1.40	1.40	1.40
150cm**	0.90	0.90	0.90	0.90	1.00	1.00	1.00	1.00	1.00	1.20	1.20	1.20

#### F Haut

115cm**	2.00	2.00	2.00	2.10	2.10	2.10	2.20	2.20	2.20	2.20	2.30	2.30
150cm**	1.50	1.50	1.60	1.60	1.70	1.70	1.70	1.80	1.80	1.80	1.80	1.80

#### MESURES DES VÊTEMENTS FINIS

B Bonnet	92.5	95	98	102	107	112	117	122	127	132	137	142
C Bonnet	94	96.5	99	103	108	113	118	123	128	133	138	143
D Bonnet	95	98	100.5	104	110	115	120	125	130	135	140	145
DD Bonnet	96.5	99	102	106	111	116	121	126	131	136	141	146
B Bonnet	89	92.5	95	99	104	110	115	120	125	130	135	140
C Bonnet	91.5	94	96.5	100.5	106	111	116	121	126	131	136	141
D Bonnet	92.5	95	98	102	107	112	117	122	127	132	137	142
DD Bonnet	94	96.5	99	103	108	113	118	123	128	133	138	143

\*\*sans sens \*\*\*avec sens \*\*\*\*avec ou sans sens