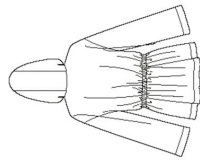


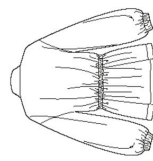
S8843

15 PIECES/PIEZAS

Medidas e instrucciones de costura en Español en el Interior del Patrón.



A,B



C,D

MISSES' ANORAK WITH OR WITHOUT HOOD

Fabrics: Cotton Types, Gabardine, Lightweight Denim, Linen Types, Twill, Lightweight Wool Types. **C** also in Organza. Extra fabric needed to match plaids, stripes or one-way design fabrics.

Notions: Thread, one 30" separating zipper, 2½ yd. of ¼" wide cording or twill tape, two cord stoppers. **A:** Seven ½" snap fasteners. **C:** ¾ yd. of 1½" wide elastic.

D: Seven ½" snap fasteners, ¾ yd. of 1½" wide elastic.

BODY MEASUREMENTS

Bust	29½	30½-31½	32½-34	36-38	40-42	44-46	48	In
Waist	22	23-24	25-26½	28-30	32-34	37-39	41½	"
Hip-9" below waist	31½	32½-33½	34½-36	38-40	42-44	46-48	50	In
Back-neck to waist	15¼	15½-15¾	16-16¼	16½-16¾	17-17¼	17½-17¾	17¾	In

Sizes	XXS	XS	S	M	L	XL	XXL
	4	6-8	10-12	14-16	18-20	22-24	26
Sizes-European	30	32-34	36-38	40-42	44-46	48-50	52

A,B,C,D Interfacing- 1 yd. of 20" to 25" lightweight fusible, such as Pellon®

A Anorak

45***	3	3%	3%	3/4	3/4	3/4	3%	3%	3%	Yd
60***	2	2%	2%	2%	2½	2½	2½	2½	2½	"

B Anorak

45***	2	2%	2%	2/4	3/4	3/4	3%	3%	3%	Yd
60***	2	2%	2%	2%	2½	2½	2½	2½	2½	"

C Anorak

45***	1½	2%	2%	2%	2¾	2¾	2¾	3	3	Yd
60***	1½	1½	1½	1¾	2	2¼	2¼	2½	2½	"

D Anorak

45***	2	2%	2%	2%	2¾	2¾	2¾	3%	3%	Yd
60***	2	2%	2%	2%	2¾	2¾	2¾	2¾	2¾	"

FINISHED GARMENT MEASUREMENTS

A,B,C,D Bust	40½	43	45½	49½	53½	57½	61½	In
Finished back length from base of neck:								
A,B,C,D	27	27½	28	28½	29	29½	30	In

*without nap **with nap ***with or without nap

JEUNE FEMME: ANORAK AVEC OU SANS CAPUCHE

Tissus: Cotonnades, Gabardine, Denim Léger, Toile de Lin, Twill, Lainages. **C** en Organza aussi. Prévoyez d'avantage de tissu pour raccorder les écosais, les rayures ou les motifs unidirectionnels.

Mercerie: Fil, une glissière séparable de 75cm, 1.90m de cordelette de 6mm de large ou de talonnette de coton, deux arrêts de cordon. **A:** Sept pressions de 1.3cm. **C:** 0.80m d'élastique de 3.2cm de large. **D:** Sept pressions de 1.3cm, 0.80m d'élastique de 3.2cm de large.

MESURES NORMALISEES

Poitrine	75	78-80	83-87	92-97	102-107	112-117	122	cm
Taille	56	58-61	64-67	71-76	81-87	94-99	106	"
Hanches (23cm au-dessous de la taille)	80	83-85	88-92	97-102	107-112	117-122	127	cm
Dos (encolure à taille)	38.5	39.5-40	40.5-41.5	42.5-43	44-44.5	44.5-44.5	44.5	cm

Tailles	TTP	TP	P	M	G	TG	TTG
	4	6-8	10-12	14-16	18-20	22-24	26
Tailles-Françaises	32	34-36	38-40	42-44	46-48	50-52	54

A,B,C,D Entoilage- 1.00m de 5.1cm à 6.4cm, léger, thermocollant tel que Pellon®

A Anorak

115cm**	2.70	2.80	2.90	2.90	3.00	3.00	3.30	m
150cm**	2.20	2.20	2.20	2.20	2.30	2.30	2.40	"

B Anorak

115cm**	2.20	2.60	2.60	2.70	3.00	3.00	3.20	m
150cm**	2.10	2.20	2.20	2.20	2.30	2.30	2.40	"

C Anorak

115cm**	1.80	2.30	2.40	2.40	2.60	2.60	2.70	m
150cm**	1.50	1.50	1.50	1.60	1.80	1.80	2.30	"

D Anorak

115cm**	2.40	2.40	2.50	2.60	2.60	2.60	3.10	m
150cm**	1.90	1.90	1.90	2.00	2.00	2.10	2.30	"

MESURES DES VÊTEMENTS FINIS

A,B,C,D Poitrine	103	110	116	126	136	146	154	cm
Longueur finie du dos depuis la base du cou:								
A,B,C,D	68.5	70	71	72.5	73.5	75	76	cm

*SANS SEINS **AVEC SEINS ***AVEC OU SANS SEINS