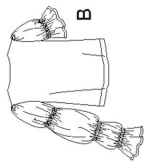


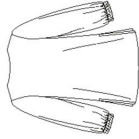
S8839

14 PIECES/PIEZAS

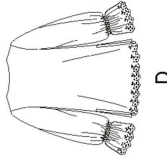
Medidas e Instrucciones de costura en Español en el interior del Patrón.



A



C



D

MISSES' PULLOVER TUNIC OR TOP WITH NECKLINE AND SLEEVE VARIATIONS

Fabrics: Cotton Lawn, Cotton Types, Dotted Swiss, Double Georgette, Linen Types, Shirtings, Silky Types. **D** in Scalloped Edge fabrics only. Extra fabric needed to match plaids, stripes or one-way design fabrics.

Notions: Thread. **A:** One pkg. of 1/2" wide single fold bias tape, 2% yd. of 1/4" wide elastic. **B:** One pkg. of 1/2" wide single fold bias tape, 1 yd. of 1/4" wide elastic. **C:** 3/4 yd. of 1" wide elastic. **D:** 3/4 yd. of 1/4" wide elastic.

BODY MEASUREMENTS (For Sizing Help Visit www.simplicity.com/sizetelp)

Bust	30½	31½	32½	34	36	38	40	42	44	In
Waist	23	24	25	26½	28	30	32	34	37	"
Hip-9" below waist	32½	33½	34½	36	38	40	42	44	46	In
Back-neck to waist	15½	15¾	16	16¼	16½	16¾	17	17¼	17¾	In
Sizes	6	8	10	12	14	16	18	20	22	
European	32	34	36	38	40	42	44	46	48	

A Top

45***

60***

1½

1%

1%

1%

1%

1%

1%

1%

1%

1%

1%

1%

1%

1%

1%

1%

1%

1%

1%

1%

1%

1%

1%

1%

1%

1%

1%

1%

1%

1%

1%

1%

1%

1%

1%

1%

1%

JEUNE FEMME: TUNIQUE OU HAUT PULL-OVER AVEC CHOIX D'ENCOLURES ET DE MANCHES

Tissus: Linon de Coton, Cotonnades, Plumets, Crêpe Georgette Double, Toile de Lin, Shirting, Tissus Soyeux. **D** en Tissus à Bord Festonné seulement. Prévoyez davantage de tissu pour raccorder les écosais, les rayures ou les motifs unidirectionnels.

Mercreie: Fil. **A:** Un paquet de ruban de biais simple de 1.3cm de large, 2.20m d'élastique de 6mm de large. **B:** Un paquet de ruban de biais simple de 1.3cm de large, 0.90m d'élastique de 6mm de large. **C:** 0.80m d'élastique de 2.5cm de large. **D:** 0.80m d'élastique de 6mm de large.

MESURES NORMALISÉES

Poitrine	78	80	83	87	92	97	102	107	112	cm
Taille	58	61	64	67	71	76	81	87	94	"
Hanches (23cm au-dessous de la taille)	83	85	88	92	97	102	107	112	117	cm
Dos (encolure à taille)	39.5	40	40.5	41.5	42	42.5	43	44	44	cm
Tailles	6	8	10	12	14	16	18	20	22	
Françaises	34	36	38	40	42	44	46	48	50	

A Haut

115cm**

150cm**

1.40

1.40

1.50

1.50

1.50

1.60

1.60

1.60

1.60

1.60

1.60

1.60

1.60

1.60

1.60

1.60

1.60

1.60

1.60

1.60

1.60

1.60

1.60

1.60

1.60

1.60

1.60

1.60

1.60

1.60

1.60

1.60

1.60

1.60

1.60

1.60

1.60

MISSES' PULLOVER TUNIC OR TOP WITH NECKLINE AND SLEEVE VARIATIONS

Fabrics: Cotton Lawn, Cotton Types, Dotted Swiss, Double Georgette, Linen Types, Shirtings, Silky Types. **D** in Scalloped Edge fabrics only. Extra fabric needed to match plaids, stripes or one-way design fabrics.

Notions: Thread. **A:** One pkg. of 1/2" wide single fold bias tape, 2% yd. of 1/4" wide elastic. **B:** One pkg. of 1/2" wide single fold bias tape, 1 yd. of 1/4" wide elastic. **C:** 3/4 yd. of 1" wide elastic. **D:** 3/4 yd. of 1/4" wide elastic.

BODY MEASUREMENTS (For Sizing Help Visit www.simplicity.com/sizetelp)

Bust	30½	31½	32½	34	36	38	40	42	44	In
Waist	23	24	25	26½	28	30	32	34	37	"
Hip-9" below waist	32½	33½	34½	36	38	40	42	44	46	In
Back-neck to waist	15½	15¾	16	16¼	16½	16¾	17	17¼	17¾	In
Sizes	6	8	10	12	14	16	18	20	22	
European	32	34	36	38	40	42	44	46	48	

A Top

45***

60***

1½

1%

1%

1%

1%

1%

1%

1%

1%

1%

1%

1%

1%

1%

1%

1%

1%

1%

1%

1%

1%

1%

1%

1%

1%

1%

1%

1%

1%

1%

1%

1%

1%

1%

1%

1%

1%

MISSES' PULLOVER TUNIC OR TOP WITH NECKLINE AND SLEEVE VARIATIONS

Fabrics: Cotton Lawn, Cotton Types, Dotted Swiss, Double Georgette, Linen Types, Shirtings, Silky Types. **D** in Scalloped Edge fabrics only. Extra fabric needed to match plaids, stripes or one-way design fabrics.

Notions: Thread. **A:** One pkg. of 1/2" wide single fold bias tape, 2% yd. of 1/4" wide elastic. **B:** One pkg. of 1/2" wide single fold bias tape, 1 yd. of 1/4" wide elastic. **C:** 3/4 yd. of 1" wide elastic. **D:** 3/4 yd. of 1/4" wide elastic.

BODY MEASUREMENTS (For Sizing Help Visit www.simplicity.com/sizetelp)

Bust	30½	31½	32½	34	36	38	40	42	44	In
Waist	23	24	25	26½	28	30	32	34	37	"
Hip-9" below waist	32½	33½	34½	36	38	40	42	44	46	In
Back-neck to waist	15½	15¾	16	16¼	16½	16¾	17	17¼	17¾	In
Sizes	6	8	10	12	14	16	18	20	22	
European	32	34	36	38	40	42	44	46	48	

A Top

45***

60***

1½

1%

1%

1%

1%

1%

1%

1%

1%

1%

1%

1%

1%

1%

1%

1%

1%

1%

1%

1%

1%

1%

1%

1%

1%

1%

1%

1%

1%

1%

1%

1%

1%

1%

1%

1%

1%

MISSES' PULLOVER TUNIC OR TOP WITH NECKLINE AND SLEEVE VARIATIONS

Fabrics: Cotton Lawn, Cotton Types, Dotted Swiss, Double Georgette, Linen Types, Shirtings, Silky Types. **D** in Scalloped Edge fabrics only. Extra fabric needed to match plaids, stripes or one-way design fabrics.

Notions: Thread. **A:** One pkg. of 1/2" wide single fold bias tape, 2% yd. of 1/4" wide elastic. **B:** One pkg. of 1/2" wide single fold bias tape, 1 yd. of 1/4" wide elastic. **C:** 3/4 yd. of 1" wide elastic. **D:** 3/4 yd. of 1/4" wide elastic.

BODY MEASUREMENTS (For Sizing Help Visit www.simplicity.com/sizetelp)

Bust	30½	31½	32½	34	36	38	40	42	44	In
Waist	23	24	25	26½	28	30	32	34	37	"
Hip-9" below waist	32½	33½	34½	36	38	40	42	44	46	In
Back-neck to waist	15½	15¾	16	16¼	16½	16¾	17	17¼	17¾	In
Sizes	6	8	10	12	14	16	18	20	22	
European	32	34	36	38	40	42	44	46	48	

A Top

45***

60***

1½

1%

1%

1%

1%

1%

1%

1%

1%

1%