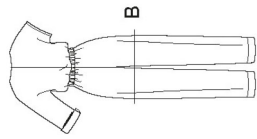


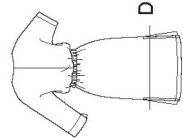
S8907

12 PIECES/PIEZAS

Medidas e instrucciones de costura en Español en el Interior del Patrón.



A



B



C

A,B,C,D

MISSES' JUMPSUIT, ROMPER, DRESS IN TWO LENGTHS AND BELT

Fabrics: Batiks, Challis, Chambray, Cotton Types, Gauze, Lightweight Denim, lightweight Linen Types, Poplin, Silky Types. Extra fabric needed to match plaids, stripes or one-way design fabrics.

Notions: Thread, 1¼ yd. of 1" wide elastic, five ½" buttons, two 1¼" D-rings.

BODY MEASUREMENTS (For Sizing Help Visit www.simplicity.com/sizinghelp)

Bust	30½	31½	32½	34	36	38	40	42	44	In
Waist	23	24	25	26½	28	30	32	34	37	"
Hip-9" below waist	32½	33½	34½	36	38	40	42	44	46	"
Back-neck to waist	15½	15¾	16	16¼	16½	16¾	17	17¼	17½	"

Sizes	6	8	10	12	14	16	18	20	22
European	32	34	36	38	40	42	44	46	48

A,B,C,D Interfacing- ¾ yd. of 20" to 25" lightweight fusible, such as Pellon®

Lining- ½ yd. of 45"*

A Jumpsuit

45"***	3½	4	4	4½	4¾	4¾	4¾	5	5½	Yd
60"***	3	3½	3½	3¾	3¾	3¾	3¾	3¾	4	"

B Romper

45"***	2½	2½	2½	2¾	2¾	2¾	2¾	2¾	3	Yd
60"***	1¾	1¾	1¾	2	2	2	2	2	2½	"

C Dress

45"***	3½	3½	3½	3¾	3¾	3¾	3¾	4	4½	Yd
60"***	2½	2½	2½	2¾	2¾	2¾	2¾	3	3½	"

D Dress

45"***	2½	2½	2½	2¾	2¾	2¾	2¾	3	3½	Yd
60"***	1½	1½	1½	2	2	2	2	2½	2½	"

FINISHED GARMENT MEASUREMENTS (Includes Design and Wearing Ease)

A,B,C,D Bust	36	37	38	39½	41½	43½	45½	47½	49½	In
A,B,C,D Hip	37½	38½	39½	42	44	45	48	50	52	"

Finished back length from base of neck:

A	57	57½	58	58½	59	59½	60	60½	61	In
B	30½	31	31½	32	32½	33	33½	34	34½	"
C	39½	39¾	40	40¼	40½	40¾	41	41¼	41½	"
D	33½	33¾	34	34¼	34½	34¾	35	35¼	35½	"
A Leg Width	15	15½	16	16½	17	17½	18	18½	19	"
B Leg Width	23½	24	24½	25	25½	26	26½	27	27½	"
C Width	36	37	38	39½	41½	43½	45½	47½	49½	"
D Width	34	35	36	37½	39½	41½	43½	45½	47½	"

*without nap **with nap ***with or without nap

JEUNE FEMME: COMBINAISON, SALOPETTE, ROBE EN DEUX LONGUEURS ET CEINTURE

Tissus: Batiks, Étamine, Chambray, Cottonnades, Gaze, Denim Léger, Toile de Lin légère, Popeline fine, Tissus Soyeux. Prévoyez davantage de tissu pour raccorder les écosais, rayures ou motifs unidirectionnels.

Mercerie: Fil, 1.10m d'élastique de 2.5cm de large, cinq boutons de 1.3cm, deux boucles en D de 3.2cm.

MESURES NORMALISÉES

Poitrine	78	80	83	87	92	97	102	107	112	cm
Taille	58	61	64	67	71	76	81	87	94	"
Hanches (23cm au-dessous de la taille)	83	85	88	92	97	102	107	112	117	cm
Dos (encolure à taille)	39.5	40	40.5	41.5	42	42.5	43	44	44	"

Tailles	6	8	10	12	14	16	18	20	22
Françaises	34	36	38	40	42	44	46	48	50

A,B,C,D Entoilage- 0.80m de 51cm à 64cm, léger, thermocollant tel que Pellon®

Doubleure- 0.50m de 115cm*

A Combinaison

115cm**	3.60	3.60	3.70	3.70	4.30	4.40	4.40	4.40	4.60	4.60	m
150cm**	2.80	2.80	2.80	3.20	3.40	3.40	3.50	3.60	3.60	3.60	"

B Salopette

115cm**	2.10	2.10	2.20	2.50	2.50	2.50	2.60	2.60	2.70	m
150cm**	1.60	1.60	1.60	2.00	2.00	2.10	2.20	2.20	2.20	"

C Robe

115cm**	3.20	3.20	3.20	3.30	3.30	3.40	3.40	3.70	3.80	m
150cm**	2.20	2.20	2.30	2.30	2.40	3.00	3.10	3.10	3.20	"

D Robe

115cm**	2.40	2.40	2.40	2.50	2.60	2.90	3.10	3.30	3.40	m
150cm**	1.70	1.70	1.70	1.80	1.80	1.90	1.90	2.20	2.20	"

MESURES DES VÊTEMENTS FINI

A,B,C,D Poitrine	91.5	94	96.5	100	106	111	116	121	126	cm
A,B,C,D Hanches	95	98	100.5	107	112	117	122	127	132	"

Longueur finie du depuis la base du cou:

A	14.5	14.6	14.8	14.9	15.0	15.1	15.3	15.4	15.5	cm
B	7.5	7.5	8.0	8.1.5	8.2.5	8.4	8.5	8.6.5	8.7.5	"
C	10.0.5	10.1	10.2	10.2	10.3	10.4	10.4	10.5	10.6	"
D	8.5	8.6	8.6.5	8.7	8.7.5	8.8.5	8.9	8.9.5	9.0	"
A Largeur de la jambe	38	39.5	40.5	42	43	44.5	45.5	47	48.5	"
B Largeur de la jambe	59.5	61	62	63.5	65	66	67.5	68.5	70	"
C Largeur	91.5	94	96.5	100.5	106	111	116	121	126	"
D Largeur	86.5	89	91.5	95	100.5	106	111	116	121	"

*sans sens **avec sens ***avec ou sans sens