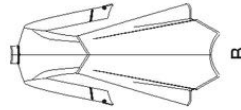
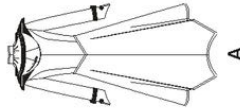


8769

24 PIECES



MISSES' COSTUME COATS

Fabrics: Medium-weight, stable fabrics such as Brocade, Crepe, Damask, Dupioni, Faille, Gabardine, Linen Types, Satin, Shantung, Taffeta, Velvet, Wool Types. Extra fabric needed to match plaids, stripes or one-way design fabrics.

Notions: Thread, one pair of shoulder pads (opt.). **A:** Six 1½" buckles with prong, four ¾" shank buttons, ¼ yd. of ¾" wide elastic cording.
B: Twelve ¾" shank buttons, ½ yd. of ¾" wide elastic cording.

Look for Simplicity Trims.

BODY MEASUREMENTS (For Sizing Help Visit www.simplicity.com/sizehelp)

Bust	30½	31½	32½	34	36	38	40	42	44	In
Waist	23	24	25	26½	28	30	32	34	37	"
Hip-9" below waist	32½	33½	34½	36	38	40	42	44	46	In
Back-neck to waist	15½	15¾	16	16½	16¾	16¾	17	17¼	17¾	In
Sizes	6	8	10	12	14	16	18	20	22	
European	32	34	36	38	40	42	44	46	48	

A Coat	4%	5	5	5½	5½	5½	5½	5½	5½	Yd
45***	3%	3%	3%	3%	4	4	4¼	4%	4½	"
60***										

Contrast Yoke, Tabs and Hood Band

45***	¾	¾	¾	¾	¾	¾	¾	¾	¾	Yd
60***	¾	¾	¾	¾	¾	¾	¾	¾	¾	"

Interfacing: 1½ yd. of 20" to 25" lightweight fusible, such as Pellon®
Trim: ¾ yd. of 1½" wide flexible braid trim, 1½ yd. of ¾" wide scroll gimp trim, 1 ¾ yd. of zipper trim

B Coat	4%	4½	4½	4½	4½	4½	4½	4½	4½	Yd
45***	3%	3%	3%	3%	3%	3%	3%	3%	4	"
60***										

Contrast Center Front and Collar and Sleeve Facing: ¾ yd. of 45" to 60***
Interfacing: 1½ yd. of 20" to 25" lightweight fusible, such as Pellon®
Trim: 2½ yd. of ½" to ¾" flexible braid trim

FINISHED GARMENT MEASUREMENTS (Includes Design and Wearing Ease)										
A,B Bust	36½	37½	38½	40	42	44	46	48	50	In
Finished back length from base of neck:										
A,B	50½	50¾	51	51½	51¾	52	52½	52¾	52½	In

*without nap **with nap ***with or without nap

TO BE USED FOR INDIVIDUAL PRIVATE HOME USE ONLY AND NOT FOR COMMERCIAL OR MANUFACTURING PURPOSES. / PARA USO PRIVADO SOLAMENTE. NO SE PUEDE UTILIZAR CON PROPOSITOS DE COMERCIALIZACION O DE PRODUCCION EN SERIE. COMMERCIALES OU DE PRODUCCION EN SERIE. / PARA USO PRIVADO SOLAMENTE. NO SE PUEDE UTILIZAR CON PROPOSITOS DE COMERCIALIZACION O DE PRODUCCION EN SERIE.

JEUNE FEMME: COSTUMES DE MANTEAUX

Tissus: Tissus fermes, de poids moyen, tels que Brocart, Crêpe, Damas, Dupioné, Faille, Gabardine, Toile de Lin, Satin, Shantung, Taffetas, Velours, Lainages. Prévoyez davantage de tissu pour raccorder les écosseis, les rayures ou les motifs unidirectionnels.

Mercerie: Fil, une paire d'épaulettes (facult.). **A:** Six boucles avec pointe de 3.2cm, quatre boutons à tige de 2.2cm, 0.30m de cordon élastique de 3mm de large.
B: Douze boutons à tige de 2.2cm, 0.50m d'élastique de 3mm de large.

Demandez les garnitures de Simplicity.

MESURES NORMALISEES

Poitrine	78	80	83	87	92	97	102	107	112	cm
Taille	58	61	64	67	71	76	81	87	94	"
Hanches (23cm au-dessous de la taille)	83	85	88	92	97	102	107	112	117	cm
Dos (encolure à taille)	39.5	40	40.5	41.5	42	42.5	43	44	44	cm
Tailles	6	8	10	12	14	16	18	20	22	
Françaises	34	36	38	40	42	44	46	48	50	

A Manteau	4.30	4.60	4.70	4.70	4.80	4.90	5.00	5.00	5.00	m
115cm**	3.50	3.50	3.50	3.50	3.60	3.70	3.90	4.00	4.10	"
150cm**										

Empiècement, Pattes et Bande de la Capuche Contrastants

115cm**	0.70	0.70	0.70	0.70	0.80	0.80	0.80	0.80	0.80	m
150cm**	0.60	0.60	0.60	0.60	0.60	0.60	0.60	0.60	0.60	"

Entoilage: 1.60m de 51cm à 64cm, léger, thermocollant tel que Pellon®
Garniture: 0.60m de garniture de soutache extensible de 3.2cm, 1.00m de soutache torsadée de 1cm de large, 1.60m de garniture de glissière

B Manteau	3.80	3.80	3.90	3.90	4.00	4.00	4.40	4.50	4.50	m
115cm**	3.10	3.10	3.20	3.20	3.30	3.30	3.50	3.60	3.70	"
150cm**										

Milieu Devant et Col et Parementure de Manche Contrastants: 0.80m de 115cm à 150cm**

Entoilage: 1.40m de 51cm à 64cm, léger, thermocollant tel que Pellon®
Garniture: 2.40m de garniture de soutache extensible de 1.3cm à 1.5cm

MESURES DES VÊTEMENTS FINIS										
A,B Poitrine	92.5	95	98	102	107	112	117	122	127	cm
Longueur finie du dos depuis la base du cou:										
A,B	128	129	130	130	131	132	132	133	133	cm

*sans seins **avec seins ***avec ou sans seins