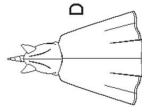
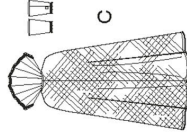
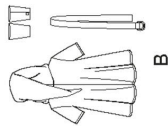
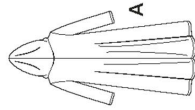


8483

20 PIECES



CHILD'S CAPE COSTUMES

Fabrics: Satin, Taffeta. **A, B Cape** also in Cotton Types, Gabardine, Linen Types.
B Gauntlets and Belt in Leather-like. **C Cape** also in Organza
D Cape also in Minky Fleece. Not suitable for sleepwear.
 Extra fabric needed to match plaids, stripes or one-way design fabrics.

Notions: Thread. **A, D:** 2" length of 3/4" wide hook and loop tape.
B: Two 1 1/4" D-rings. **B, C:** 4" length of 3/4" wide hook and loop tape.
C: 1 1/4 yd. of 3/8" wide lace trim. **C, D:** 3/4 yd. of 1/2" wide ribbon.
D: 1 yd. of marabou boa trim, one 5" x 9" piece of lightweight cardboard, 2 ozs. of polyester fiberfill.
 Look for Simplicity Trims.

BODY MEASUREMENTS

Chest	22-23	24-25	26-27	In
Waist	20 1/2-21	21 1/2-22	23-23 1/2	"
Hip	24	25-26	27-28	"
Back-neck to waist	9-9 1/2	10-10 1/2	11 1/2-12	"
Approx. Height	38-41	44-47	50-52	"
Sizes	S	M	L	
	3-4	5-6	7-8	

A Cape 60"***
Hood Contrast and Facings 60"***

Interfacing- 1 1/2 yd. of 20" to 25" lightweight fusible, such as Pellon®

B Cape 60"***
Gauntlets and Belt- 1/2 yd. of 60"***

Interfacing- 1 1/2 yd. of 20" to 25" lightweight fusible, such as Pellon®

C Cape 60"***
Contrast Collar, Gauntlets, Neck Facing and Front Binding 60"***

Interfacing- 3/4 yd. of 20" to 25" lightweight fusible, such as Pellon® (for tab and gauntlets); 1/4 yd. of 20" heavyweight one-sided fusible, such as Pellon® Peltext® (for collar).

D Cape 60"***
Belly, Horn, Hood and Ear Contrast and Facings 60"***

Interfacing- 1 yd. of 20" to 25" lightweight fusible, such as Pellon®

FINISHED GARMENT MEASUREMENTS (Chest and Hip Printed on Pattern Tissue)

A,C	32 1/2	36	39 1/2	In
B,D	21	24 1/2	28	"

*without nap **with nap ***with/without nap

ENFANT: COSTUMES DE CAPE

Tissus: Satin, Taffetas. **A, B Cape** en Cotonnades, Gabardine, Toile de Lin aussi.
B Gantelets et Ceinture en tissus simili-cuir. **C Cape** en Organza aussi.
D Cape en Molleton Doux aussi. Ces modèles ne conviennent pas pour vêtements de nuit. Prévoyez davantage de tissu pour raccorder les écosais, les rayures ou les motifs unidirectionnels.

Merci: Fil. **A, D:** un morceau de fermeture agrippante de 5cm à 2cm de large.
B: Deux boucles en D de 3.2cm. **B, C:** un morceau de fermeture agrippante de 10cm de long et de 2cm de large. **C:** 1.30m de garniture de dentelle de 1.5cm de large.
C, D: 0.60m de ruban de 2.2cm de large. **D:** 0.90m de garniture de boa de marabout, un morceau de carton léger de 12.5cm x 23cm, 56 grammes de bourre de polyester. Demandez les garnitures de Simplicity.

MESURES NORMALISÉES

Poitrine	56-58	61-62	66-69	cm
Taille	52-53	55-56	58-60	"
Hanches	61	64-66	69-71	"
Dos (encolure à taille)	23-24	25.5-27	29.5-31	cm
Taille approx.	97-104	112-119	127-132	"
Tailles	P	M	G	
	3-4	5-6	7-8	

A Cape 150cm**
Parties Contrastantes de la Capuche et Parementures 150cm**

Entoilage- 1.30m de 5.1cm à 6.4cm, léger, thermocollant tel que Pellon®

B Cape 150cm**
Gantelets et Ceinture- 0.40m de 150cm**

Entoilage- 1.20m de 5.1cm à 6.4cm, léger, thermocollant tel que Pellon®

C Cape 150cm**
Col, Gantelets, Parementure d'Encolure et Bordure du Devant Contrastants 150cm**

Entoilage- 0.40m de 5.1cm à 6.4cm, léger, thermocollant tel que Pellon® (pour la patte et les gantelets); 0.70m de 5.1cm épais, avec un côté thermocollant tel que Pellon® Peltext® (pour le col).

D Cape 150cm**
Ventre, Corne, Capuche et Contrastes des Oreilles et Parementures 150cm**

Entoilage- 0.90m de 5.1cm à 6.4cm, léger, thermocollant tel que Pellon®

MESURES DES VÊTEMENTS FINIS

A,C	82.5	91.5	100.5	cm
B,D	53.5	62	71	"

*sans sens **avec sens ***avec ou sans sens