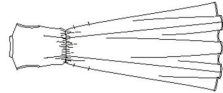


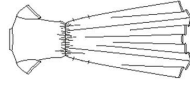
8384

12 PIECES/PIEZAS

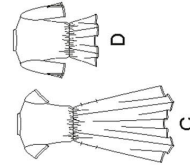
Métrages et Instructions de couture en Français à l'intérieur de l'enveloppe.



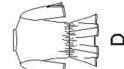
A



B



C



D

MISSIES' DRESS WITH LENGTH VARIATIONS AND TOP

Fabrics: Stable lightweight to medium-weight fabrics such as: Batiks, Batiste, Challis, Chambray, Cotton Lawn, Cotton Types, Dotted Swiss, Eyelet, Gingham, Lightweight Denim, Linen Types, Pique, Poplin, Seersucker, and Shirting. Extra fabric needed to match plaids, stripes or one-way design fabrics.
 Notions: Thread, three 5/8" buttons. A: one pkg. of 1/2" wide single fold bias tape.
 Look for Simplicity Trims.

BODY MEASUREMENTS (For Sizing Help Visit www.simplicity.com/sizhelp)

Bust	30 1/2	31 1/2	32 1/2	34	36	38	40	42	44	46	48	50
Waist	23	24	25	26 1/2	28	30	32	34	37	39	"	"
Hip-9" below waist	32 1/2	33 1/2	34 1/2	36	38	40	42	44	46	48	"	"
Back-neck to waist	15 1/2	15 3/4	16	16 1/4	16 1/2	16 3/4	17	17 1/4	17 1/2	17 3/4	17 1/2	17 1/2
Sizes	6	8	10	12	14	16	18	20	22	24		
European	32	34	36	38	40	42	44	46	48	50		
A,B,C,D Interfacing- 3/4 yd. of 20" to 25" lightweight fusible, such as Pellon®												
Elastic- 3/4 yd. of 1/2" wide												

A Dress	4 1/4	5	5 1/2	5 3/4	5 1/2	5 3/4	5 1/2	5 3/4	5 1/2	5 3/4	5 1/2	5 3/4
45***	3 1/4	3 1/2	3 3/4	3 1/2	3 3/4	3 1/2	3 3/4	3 1/2	3 3/4	3 1/2	3 3/4	3 1/2
60***												
B Dress	3 1/4	4	4 1/4	4 1/2	4 1/4	4 1/2	4 1/4	4 1/2	4 1/4	4 1/2	4 1/4	4 1/2
45***	2 1/2	2 1/2	2 1/2	2 1/2	2 1/2	2 1/2	2 1/2	2 1/2	2 1/2	2 1/2	2 1/2	2 1/2
60***												
C Dress	2 1/4	2 1/4	2 1/4	2 1/4	2 1/4	2 1/4	2 1/4	2 1/4	2 1/4	2 1/4	2 1/4	2 1/4
45***	2 1/4	2 1/4	2 1/4	2 1/4	2 1/4	2 1/4	2 1/4	2 1/4	2 1/4	2 1/4	2 1/4	2 1/4
60***												
D Top	1 1/4	1 1/4	1 1/4	1 1/4	1 1/4	1 1/4	1 1/4	1 1/4	1 1/4	1 1/4	1 1/4	1 1/4
45***	1 1/4	1 1/4	1 1/4	1 1/4	1 1/4	1 1/4	1 1/4	1 1/4	1 1/4	1 1/4	1 1/4	1 1/4
60***												

FINISHED GARMENT MEASUREMENTS (Includes Design and Wearing Ease)

A,B,C,D Bust	35 1/2	36 1/2	37 1/2	39	41	43	45	47	49	51	In
Finished back length from base of neck	55 1/2	55 1/2	56	56 1/2	56 1/2	56 1/2	57	57 1/2	57 1/2	57 1/2	In
A	43 1/2	43 1/2	44	44 1/2	44 1/2	44 1/2	45	45 1/2	45 1/2	45 1/2	In
B	37 1/2	37 1/2	38	38 1/2	38 1/2	38 1/2	39	39 1/2	39 1/2	39 1/2	In
C	22 1/2	22 1/2	23	23 1/2	23 1/2	23 1/2	24	24 1/2	24 1/2	24 1/2	In
D											In

*without nap **with nap ***with or without nap

JEUNE FEMME: ROBE AVEC CHOIX DE LONGUEURS ET DE HAUTS

Tissus: Tissus fermes, légers à moyens tels que: Batiks, Batiste, Étamine, Chambray, Linon de Coton, Cotonnades, Plumets, Broderie anglaise, Vichy, Denim léger, Toile de Lin, Piqué, Popeline fine, Seersucker et Shirting. Prévoyez davantage de tissu pour raccorder les écosais, rayures ou motifs unidirectionnels.
 Mercerie: Fil, trois de boutons de 1.5cm. A: Un paquet de ruban de biais simple de 1.3cm de large. Demandez les garnitures de Simplicity.

SEÑORITAS: VESTIDO CON DIFERENTES LARGOS Y BLUSAS

Telas: Telas firmes ligeras a medianas como: Batik, Batista, Chali, Chambray, Linón de Algodón, Mezclas de Algodones, Plumets, Bordado inglés, Guingán, Drill ligero, Tela de Lino, Piqué, Popelina fina, Seersucker y Shirting. Se necesita tela adicional para casar cuadros, rayas o telas estampadas en una dirección.
 Mercería: Hilo, tres botones de 1.5cm. A: Un paquete de cinta de bias sencillo de 1.3cm de ancho. Pida los adornos de Simplicity.

MESURES NORMALISEES/MEDIDAS DEL CUERPO

Poitrine/Busto	78	80	83	87	92	97	102	107	112	117	cm
Taille/Cintura	58	61	64	67	71	76	81	87	94	99	"
Hanches (23cm au-dessous de la taille)/Caderas (23cm abajo de la cintura)	83	85	88	92	97	102	107	112	117	122	cm

Dos (encolure à taille/Espalda (escote a cintura))

Pida los adornos de Simplicity.	39.5	40	40.5	41.5	42	42.5	43	44	44	44.5	cm
---------------------------------	------	----	------	------	----	------	----	----	----	------	----

Tailles/Tallas	6	8	10	12	14	16	18	20	22	24
Françaises	34	36	38	40	42	44	46	48	50	52
Europeas	32	34	36	38	40	42	44	46	48	50

A,B,C,D Envoilage- 0.60m de 51cm à 64cm, léger, thermocollant como Pellon®

A,B,C,D Entreteila- 0.60m de 51cm a 64cm, ligera adhesiva, como Pellon®

Elastique- 0.70m de 6mm de large / Elástico- 0.70m de 6mm de largo

A Robe/ A Vestido

115cm**	3.80	4.90	4.90	4.90	4.90	5.00	5.00	5.00	5.00	5.00	m
150cm**	3.40	3.40	3.40	3.40	3.40	3.40	3.40	3.40	3.50	3.60	"

B Robe/ B Vestido

115cm**	3.50	3.60	3.70	3.90	4.10	4.20	4.20	4.30	4.30	4.30	m
150cm**	2.30	2.30	2.40	2.40	2.40	2.50	2.50	2.50	2.60	2.70	"

C Robe/ C Vestido

115cm**	2.40	2.50	2.60	2.70	2.80	2.90	3.00	3.10	3.30	3.60	m
150cm**	2.00	2.00	2.00	2.00	2.10	2.20	2.20	2.20	2.20	2.20	"

D Haut/ D Blusa

115cm**	1.40	1.50	1.50	1.50	1.50	1.70	1.70	1.70	1.70	1.90	m
150cm**	1.20	1.20	1.20	1.20	1.20	1.20	1.20	1.20	1.20	1.30	"

sans sens **avec sens *avec ou sans sens *sin pelusa **con pelusa ***sin o con pelusa