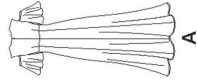


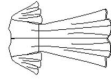
# 8292

17 PIECES/PIEZAS

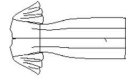
Métrages et Instructions de couture en Français à l'intérieur de l'enveloppe.



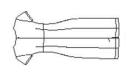
A



B



C



D

## MISSES/MISS PETITE DRESSES

**Fabrics:** Chambray, Charmeuse, Cotton Lawn, Crepe, Crepe de Chine, Double Georgette, Silky Types, Voile. Extra fabric needed to match plaids, stripes, and one-way design fabrics.

Extra fabric needed to match plaids, stripes or one-way design fabrics.

**Notions:** Thread, one 22" invisible zipper. Look for Simplicity Trims.

### BODY MEASUREMENTS (For Sizing Help Visit [www.simplicity.com/sizehelp](http://www.simplicity.com/sizehelp))

|   |        |     |     |     |     |     |    |     |     |    |
|---|--------|-----|-----|-----|-----|-----|----|-----|-----|----|
| <b>Bust</b>   | 30½    | 31½ | 32½ | 34  | 36  | 38  | 40 | 42  | 44  | In |
| <b>Waist</b>  | 23     | 24  | 25  | 26½ | 28  | 30  | 32 | 34  | 37  | "  |
| <b>Hip-9" below waist</b>   | 32½    | 33½ | 34½ | 36  | 38  | 40  | 42 | 44  | 46  | "  |
| <b>Back-neck to waist</b>   | 15½    | 15½ | 16  | 16½ | 16½ | 16½ | 17 | 17¼ | 17½ | "  |
| <b>Sizes</b>  | 6      | 8   | 10  | 12  | 14  | 16  | 18 | 20  | 22  |    |
| <b>European</b>   | 32     | 34  | 36  | 38  | 40  | 42  | 44 | 46  | 48  |    |
| <b>A,B,C,D Lining</b>   | ½      | ½   | ½   | ½   | ½   | ¾   | ¾  | ¾   | ¾   | Yd |
| <b>Interfacing</b> - % yd. of 20" to 25" lightweight fusible, such as Pellon® | 4%     | 4%  | 4%  | 4%  | 4%  | 4%  | 4% | 4%  | 4%  | Yd |
|   | 3      | 3   | 3   | 3   | 3   | 3   | 3  | 3   | 3   | "  |
| <b>A Dress</b>  | 45"*** |     |     |     |     |     |    |     |     | Yd |
|   | 60"*** |     |     |     |     |     |    |     |     | "  |
| <b>B Dress</b>  | 45"*** |     |     |     |     |     |    |     |     | Yd |
|   | 60"*** |     |     |     |     |     |    |     |     | "  |
| <b>C Dress</b>  | 2½     | 2½  | 2½  | 2½  | 2½  | 2½  | 2½ | 2½  | 2½  | Yd |
|   | 45"*** |     |     |     |     |     |    |     |     | "  |
|   | 60"*** |     |     |     |     |     |    |     |     | "  |
| <b>D Dress</b>  | 1½     | 1½  | 1½  | 1½  | 1½  | 1½  | 1½ | 1½  | 1½  | Yd |
|   | 45"*** |     |     |     |     |     |    |     |     | "  |
|   | 60"*** |     |     |     |     |     |    |     |     | "  |

### FINISHED GARMENT MEASUREMENTS (Includes Design and Wearing EASE)

|   |   |     |     |     |     |     |     |     |     |    |
|---|---|-----|-----|-----|-----|-----|-----|-----|-----|----|
| <b>A,B,C,D Bust</b>                           | 33½   | 34½ | 35½ | 37  | 39  | 41  | 43  | 45  | 47  | In |
| <b>Finished back length from base of neck</b> | 49½   | 49½ | 50  | 50½ | 50½ | 50½ | 51  | 51½ | 51½ | In |
| <b>A</b>                                      | 33½   | 33½ | 34  | 34½ | 34½ | 34½ | 35  | 35½ | 35½ | "  |
| <b>B</b>                                      | 40½   | 40½ | 41  | 41½ | 41½ | 41½ | 42  | 42½ | 42½ | "  |
| <b>C</b>                                      | 35½   | 35½ | 36  | 36½ | 36½ | 36½ | 37  | 37½ | 37½ | "  |
| <b>D</b>                                      | 48  | 49  | 50  | 51½ | 53½ | 55½ | 57½ | 59½ | 61½ | "  |
| <b>A Width</b>                                | 61  | 62  | 63  | 64½ | 66½ | 68½ | 70½ | 72½ | 74½ | "  |
| <b>B Width</b>                                | 34  | 35  | 36  | 37½ | 39½ | 41½ | 43½ | 45½ | 47½ | "  |
| <b>C,D Width</b>                              | ***with nap **with nap ***with or without nap |     |     |     |     |     |     |     |     |    |

TO BE USED FOR INDIVIDUAL PRIVATE HOME USE ONLY AND NOT FOR COMMERCIAL OR MANUFACTURING PURPOSES / A USAGE PRIVÉ SEULEMENT ET NON À DES FINS COMMERCIALES OU DE PRODUCTION EN SÉRIE / PARA USO PRIVADO SOLAMENTE, NO SE PUEDE UTILIZAR CON PROPÓSITOS DE COMERCIALIZACIÓN O DE PRODUCCIÓN EN SÉRIE.

## JEUNE FEMME/PETITE JEUNE FEMME: ROBES

**Tissus:** Chambray, Charmeuse, Linon, Crépe, Crépe de Chine, Crêpe Georgette Double, Tissus soyeux, Voile. Prévoyez davantage de tissu pour raccorder les échantillons, rayures ou motifs unidirectionnels.

**Mercerie:** Fil, una glissière invisible de 55cm. Demandez les garnitures de Simplicity Trims.

### SEÑORITAS/SEÑORITAS PEQUEÑAS: VESTIDOS

**Telas:** Chambray, Charmeuse, Linón, Crépe, Crépe de China, Crépé Georgette Doble, Telas Sedosas, Velo. Se necesita tela adicional para casar cuadros, rayas o telas estampadas en una dirección.

**Mercería:** Hilo, una cremallera invisible de 55cm. Pida los adornos de Simplicity Trims.

### MESURES NORMALISÉES/MEDIDAS DEL CUERPO

|  |         |      |      |      |      |      |      |      |      |    |
|--|---------|------|------|------|------|------|------|------|------|----|
| <b>Poitrine/Busto</b>  | 78      | 80   | 83   | 87   | 92   | 97   | 102  | 107  | 112  | cm |
| <b>Taille/Cintura</b>  | 58      | 61   | 64   | 67   | 71   | 76   | 81   | 87   | 94   | "  |
| <b>Hanches (23cm au-dessous de la taille)/Caderas (23cm abajo de la cintura)</b> | 83      | 85   | 88   | 92   | 97   | 102  | 107  | 112  | 117  | "  |
| <b>Dos (encolure á taille)/Espalda (escote a cintura)</b>                        | 39.5    | 40   | 40.5 | 41.5 | 42   | 42.5 | 43   | 44   | 44   | "  |
| <b>Tailles/Tallas</b>  | 6       | 8    | 10   | 12   | 14   | 16   | 18   | 20   | 22   |    |
| <b>Françaises</b>  | 34      | 36   | 38   | 40   | 42   | 44   | 46   | 48   | 50   |    |
| <b>Européas</b>  | 32      | 34   | 36   | 38   | 40   | 42   | 44   | 46   | 48   |    |
| <b>A,B,C,D Doublure / A,B,C,D Forro</b>  | 115cm*  | 0.50 | 0.50 | 0.50 | 0.50 | 0.50 | 0.60 | 0.60 | 0.60 | m  |
|  | 115cm** | 0.50 | 0.50 | 0.50 | 0.50 | 0.50 | 0.60 | 0.60 | 0.60 | "  |
| <b>Entoilage</b> - 0.30m de 51cm á 64cm léger thermocollant tels que Pellon®     | 0.30    | 0.30 | 0.30 | 0.30 | 0.30 | 0.30 | 0.30 | 0.30 | 0.30 | m  |
| <b>Entretele</b> - 0.30m de 51cm á 64cm légère adhésive como Pellon®             | 0.30    | 0.30 | 0.30 | 0.30 | 0.30 | 0.30 | 0.30 | 0.30 | 0.30 | m  |
| <b>A Robe / A Vestido</b>  | 3.70    | 3.70 | 3.80 | 3.80 | 3.80 | 3.80 | 3.90 | 3.90 | 4.10 | m  |
|  | 115cm** | 2.70 | 2.70 | 2.80 | 2.80 | 2.80 | 2.80 | 2.80 | 2.90 | "  |
|  | 150cm** | 2.70 | 2.70 | 2.80 | 2.80 | 2.80 | 2.80 | 2.80 | 2.90 | "  |
| <b>B Robe / B Vestido</b>  | 2.00    | 2.00 | 2.50 | 2.50 | 2.60 | 2.70 | 2.70 | 2.70 | 2.80 | m  |
|  | 115cm** | 1.60 | 1.60 | 1.70 | 1.70 | 1.70 | 1.70 | 1.70 | 1.80 | "  |
|  | 150cm** | 1.60 | 1.60 | 1.70 | 1.70 | 1.70 | 1.70 | 1.70 | 1.80 | "  |
| <b>C Robe / C Vestido</b>  | 2.10    | 2.20 | 2.40 | 2.40 | 2.40 | 2.40 | 2.50 | 2.50 | 2.50 | m  |
|  | 115cm** | 1.70 | 1.70 | 1.80 | 1.80 | 1.80 | 1.80 | 1.80 | 1.90 | "  |
|  | 150cm** | 1.70 | 1.70 | 1.80 | 1.80 | 1.80 | 1.80 | 1.80 | 1.90 | "  |
| <b>D Robe / D Vestido</b>  | 1.50    | 1.50 | 1.60 | 1.60 | 1.60 | 1.60 | 1.70 | 1.70 | 1.80 | m  |
|  | 115cm** | 1.10 | 1.20 | 1.20 | 1.20 | 1.30 | 1.30 | 1.30 | 1.40 | "  |
|  | 150cm** | 1.10 | 1.20 | 1.20 | 1.20 | 1.30 | 1.30 | 1.30 | 1.40 | "  |

\*sans sens \*\*avec sens \*\*\*avec ou sans sens \*sin pelusa \*\*con pelusa \*\*\*sin o con pelusa