

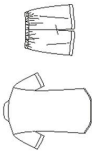
8180

17 PIECES/PIEZAS

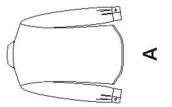
Medidas e Instrucciones de costura en Español en el Interior del Patrón.



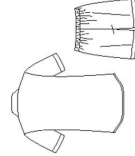
A



B



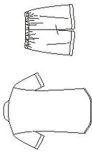
A



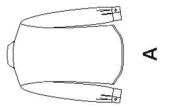
B



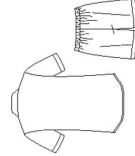
D



C



A



B

BOYS' AND MEN'S SHIRT, BOXER SHORTS AND TIE

Fabrics: Broadcloth, Chambray, Cotton Types, Gingham, Pinwale Corduroy, Poplin. Extra fabric needed to match plaids, stripes or one-way design fabrics. Boys' sizes not suitable for sleepwear.

Notions: Thread. **A:** Eight 1/2" buttons. **B:** Six 1/2" buttons. **C:** Two snaps.

Look for Simplicity Trims.

BODY MEASUREMENTS

Size	Boys					Men						
	S	M	L	S	M	L	XL	S	M	L	XL	
Chest	22-23	24-25	26-27	34-36	38-40	42-44	46-48	In				
Waist	20 1/2-21	21 1/2-22	23-23 1/2	28-30	32-34	36-39	42-44	"				
Hip	- 24	25-26	27-28	35-37	39-41	43-45	47-49	"				
Height	38-41	44-47	50-52					In				

A Shirt

45*** 1 1/4

60*** 1 1/4

Interfacing- 20" to 25" lightweight fusible, such as Pellon®. 1/4 yd. for Boys' sizes, 1 1/2 yd. for Men's sizes

B Shirt

45*** 1 1/4

60*** 1 1/4

Interfacing- 20" to 25" lightweight fusible, such as Pellon®. 1/4 yd. for Boys' sizes, 1 1/2 yd. for Men's sizes

C Boxer Shorts

45*** 3/4

60*** 1/2

Elastic- 3/4 yd. of 3/4" wide for Boys' sizes, 1 1/2 yd. of 1 1/4" wide for Men's sizes.

D Tie- 45" or 60"***

Interfacing- 20" to 25" lightweight fusible, such as Pellon®. 1/4 yd. for Boys' sizes, 3/4 yd. for Men's sizes

GARMENT MEASUREMENTS (Chest & Hip Printed on Pattern Tissue)

A,B Chest	29	31	33	43	47	51	55	In
C Hip	26	28	30	40 1/2	44 1/2	48 1/2	52 1/2	"
Finished back length from base of neck:								
A,B	17 1/2	18	18 1/2	26 1/2	27	27 1/2	28	In
C Side Length	11 1/2	12 1/4	13	17 1/2	18	18 1/2	19	In
C Leg Width	16 1/2	18 1/2	20 1/2	23	27	31	35	In

without nap *with nap ****with or without nap

TO BE USED FOR INDIVIDUAL PRIVATE HOME USE ONLY AND NOT FOR COMMERCIAL OR MANUFACTURING PURPOSES / A USAGE PRIVÉ SEULEMENT ET NON À DES FINS COMMERCIALES OU DE PRODUCTION EN SÉRIE / PARA USO PRIVADO SOLAMENTE, NO SE PUEDE UTILIZAR CON PROPÓSITOS DE COMERCIALIZACIÓN O DE PRODUCCIÓN EN SÉRIE.

GARÇONNET ET HOMME: CHEMISE, SHORT ET CRAVATE

Tissus: Popeline, Chambray, Cotonnades, Vichy, Velours Millierales, Popeline fine. Prévoyez davantage de tissu pour raccorder les écoussais, les rayures ou les motifs unidirectionnels.

Mécanique: Fil. **A:** Huit boutons de 1.3cm. **B:** Six boutons de 1.3cm. **C:** Deux pressions.

Demandez les garnitures de Simplicity.

MESURES NORMALISEES

Size	GARÇONNET					HOMME						
	P	M	G	P	M	G	P	M	G	TG		
Poitrine	56-58	61-64	66-69	87-92	97-102	107-112	117-122	cm				
Taille	52-53	55-56	58-60	71-76	81-87	92-99	107-112	cm				
Hanches	-61	64-66	69-71	89-94	99-104	109-114	119-124	cm				
Taille Approx.	97-104	112-119	127-132					cm				

A Chemise

115cm** 1.20

150cm** 1.10

Entoilage- 51cm à 64cm léger, thermoquant tel que Pellon®. 0.80m pour les tailles Gargonnet, 1.30m pour les tailles Homme

B Chemise

115cm** 1.00

150cm** 0.80

Entoilage- 51cm à 64cm léger, thermoquant tel que Pellon®. 0.70m pour les tailles Gargonnet, 1.00m pour les tailles Homme.

C Short

115cm** 0.60

150cm** 0.50

Elastique- 0.80m de 2cm de large pour les tailles Gargonnet, 1.30m de large pour la taille Homme.

D Lien- 115cm ou 150cm**

Entoilage- 51cm à 64cm léger, thermoquant tel que Pellon®. 0.50m pour les tailles Gargonnet, 0.70m pour les tailles Homme.

MESURES DES VÊTEMENTS (Poitrine & Hanches imprimées sur sie Patron)

A,B Poitrine	73.5	78.5	84	110	120	130	140	cm
C Hanches	66	71	76	103	113	123	133	"
Longueur finie du dos depuis la base du dos:								
A,B	44	45.5	47	67.5	68.5	70	71	cm
C Longueur du Côté	29	31	33	44	45.5	47	48.5	cm
C Largeur de Jambe	42	47	52	58.5	68.5	78.5	89	cm

sans sens *avec sens ****avec ou sans sens