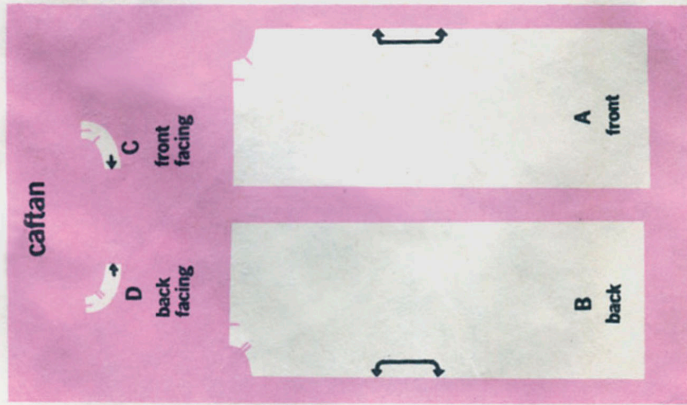
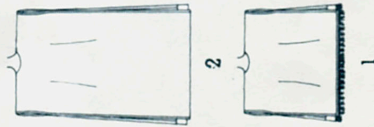


5628

4 PIECES GIVEN



SIMPLE-TO-SEW®

MISSES' AND WOMEN'S JIFFY® CAFTAN IN TWO LENGTHS:
The caftan with stitching lines for small, medium, large and extra large has side openings. Short length V. 1 has novelty fringe trim. V. 2 is ankle length.

Suggested fabrics: Broadcloth, terrycloth, canvas, duck, cotton sateen, linen, surah, challis, jersey, matte jersey, double knit, homespun, lightweight wool.

SIMPLE-TO-SEW® MISSES' AND WOMEN'S JIFFY® CAFTAN IN TWO LENGTHS — ONE SIZE.

Metric Conversion Chart given on enclosed direction sheet.

Extra fabric is needed to match plaids, stripes or one-way designs.
Use nap yardage and nap layouts for one-way design fabrics.

Fabric required

ONE SIZE

NOTE: THIS ONE SIZE PATTERN HAS STITCHING LINES IN FRONT AND BACK SECTIONS FOR SMALL (8-10), MEDIUM (12-14), LARGE (16-18) AND EXTRA LARGE (20-40).

View 1 Caftan

44" or 45" with or without nap	2¼	Yds.
54" — " " " "	2¼	"
58" — " " " "	2¼	"
60" — " " " "	2½	"

Novelty fringe trim — 2½ yards of 1¾" wide.

View 2 Caftan

44" or 45" with or without nap	3½	"
54" — " " " "	3½	"
58" — " " " "	3½	"
60" — " " " "	3¾	"

Garment Measurements

Finished back length of view 1	32½	Ins.
Finished back length of view 2	54	"

Width of lower edge of view 1 or 2

	84½	Ins.
--	-----	------

Sewing notions — Thread, seam binding or stretch lace (opt.).