

# 1551

## 12 PIECES

### MISSES' COSTUME

**Fabrics:** Crepe, Laundered Silks-Rayons, Sandwashed Silk, Sueded Silks-Rayons, A Contrast in Chiffon, Georgette, Novelty Sheer Fabrics. Extra fabric needed to match plaids, stripes or one-way design fabrics.

**Notions:** Thread, one 22" zipper, hook and eye. **A:** Two appliques, three hooks. Look for Simplicity Trims.

#### BODY MEASUREMENTS (For Sizing Help Visit [www.simplicity.com/sizehelp](http://www.simplicity.com/sizehelp))

<b>Bust</b>	31½	32½	34	36	38	40	42	44	46	In
<b>Waist</b>	24	25	26½	28	30	32	34	37	39	"
<b>Hip-9" below waist</b>										
	33½	34½	36	38	40	42	44	46	48	"
<b>Back-neck to waist</b>										
	15¾	16	16¼	16½	16¾	17	17¼	17½	17½	"

<b>Size</b>	8	10	12	14	16	18	20	22	24
<b>Sizes-European</b>	34	36	38	40	42	44	46	48	50

#### A Dress

45***	8½	9	9	9¼	9½	9¾	10	10½	10½	Yd
60***	6½	6¾	6¾	7¼	7½	7½	7½	7½	7½	"

#### Contrast Sleeves and Neck Drape

45***	¾	¾	¾	¾	¾	¾	¾	¾	¾	Yd
60***	¾	¾	¾	¾	¾	¾	¾	¾	¾	"

**Interfacing** ¾ yd. of 20" to 25" lightweight fusible, such as Pellon®

#### B Dress

45***	11¾	11¾	11¾	12½	12½	12½	13	13¾	13¾	Yd
60***	7½	7¾	8½	8½	8½	9	9¼	9½	9½	"

**Contrast Front Insert and Drape** ¾ yd. of 45" or 60"

**Interfacing** 1 yd. of 20" to 25" lightweight fusible, such as Pellon®

#### FINISHED GARMENT MEASUREMENTS (Includes Design and Wearing EASE)

<b>A,B Bust</b>	34	35	36½	38½	40½	42½	44½	46½	48½	In
-----------------	----	----	-----	-----	-----	-----	-----	-----	-----	----

\*without nap \*\*with nap \*\*\*with or without nap

### COSTUME POUR JEUNE FEMME

**Tissus:** Crêpe, Soies-Rayonnes prélavées, Soie lavée au sable, Soies-Rayonnes Suédées, A Parties Contrastantes en Mousseline, Crêpe Georgette, Tissus fantaisie transparents. Prévoyez davantage de tissu pour raccorder les écossais, les rayures ou les motifs unidirectionnels.

**Mercerie:** Fil. Une glissière de 55cm, une agrafe. **A:** Deux application, trois agrafes. Demandez les garnitures de Simplicity Trims.

#### MESURES NORMALISÉES

<b>Poitrine</b>	80	83	87	92	97	102	107	112	117	cm
<b>Taille</b>	61	64	67	71	76	81	87	94	99	"
<b>Hanches (23cm au-dessous de la taille)</b>										
	85	88	92	97	102	107	112	117	122	cm
<b>Dos (encolure à taille)</b>										
	40	40.5	41.5	42	42.5	43	44	44	44.5	cm

<b>Tailles</b>	8	10	12	14	16	18	20	22	24
<b>Tailles-Fr.</b>	36	38	40	42	44	46	48	50	52
<b>Tailles-Euro.</b>	34	36	38	40	42	44	46	48	50

#### A Robe

115cm***	8.20	8.20	8.20	8.50	8.70	8.90	9.20	9.60	9.80	m
150cm***	5.80	5.90	6.20	6.70	6.70	6.70	6.80	6.80	6.80	"

#### Manches et Drapé d'encolure Contrastantes

115cm***	3.40	3.40	3.40	3.40	3.50	3.50	3.50	3.50	3.50	m
150cm***	2.80	2.80	2.80	2.80	2.80	2.80	2.80	2.80	2.80	"

**Entoilage** 0.70m de 51cm à 64cm, léger, thermocollant, tel que Pellon®

#### B Robe

115cm***	10.80	10.80	10.90	11.10	11.30	11.60	11.80	12.20	12.50	m
150cm***	7.00	7.10	7.50	7.80	8.10	8.30	8.40	8.50	8.60	"

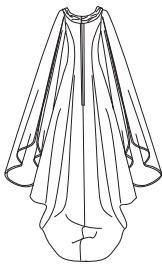
**Incrustation et Drapé devant contrastants** 0.80m de 115cm\*\*\* ou 150cm\*\*\*

**Entoilage** 0.90m de 51cm à 64cm, léger, thermocollant, tel que Pellon®

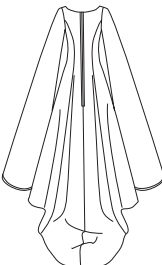
#### MESURES DES VÊTEMENTS FINIS

<b>A,B Poitrine</b>	86.5	89	92.5	98	103	108	111	118	123	cm
---------------------	------	----	------	----	-----	-----	-----	-----	-----	----

\*sans sens \*\*avec sens \*\*\*avec ou sans sens



A



B