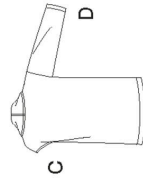
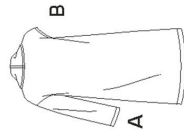


5 PIECES/PIEZAS

Métrages et instructions de couture en Français à l'intérieur de l'enveloppe.



6474
 U.S. 6-16
 FR. 34-44
 EURO. 32-42

MISSSES' SIX SIZES IN ONE

Sizes	6	8	10	12	14	16
European Size	32	34	36	38	40	42
Bust	30½	31½	32½	34	36	38
Waist	23	24	25	26½	28	30
Hips	32½	33½	34½	36	38	40
Back-neck to waist	15½	15¾	16	16¼	16½	16¾

A,B,C,D Pocket Lining and Back Facing

45***	¾	¾	¾	¾	¾	¾
Interfacing - 1¼ yd. of 22" to 25" lightweight fusible, such as Pellon®						

A	45***	3¾	3¾	3¾	3¾	4	4	4	Yd
60***	2%	2½	2¾	2¾	3	3½	3½	3½	"

B	45***	3¾	3¾	3¾	3¾	4	4	4	Yd
60***	2%	2%	2%	2½	2½	2½	2½	2½	"

C	45***	3	3	3	3	3¼	3¼	3¼	Yd
60***	2	2	2	2	2	2¼	2¼	2¼	"

D	45***	3	3	3	3	3¼	3¼	3¼	Yd
60***	2	2	2	2	2	2	2	2	"

GARMENT MEASUREMENTS

Finished back length from base of neck:

A,B	40	40¼	40½	40¾	41	41¼
C,D	31½	31¾	32	32¼	32½	32¾

SUGGESTED FABRICS

Double Faced fabrics only, such as: Boucle, Microsuede, Wool Types, Double Faced Fleece, Fleece, Ponte. Allow extra fabric for matching plaids or stripes.

REQUIREMENTS: Thread.

without nap *with or without nap ****with or without nap

JEUNE FEMME: PATRON SIX TAILLES

SEÑORITAS: PATRON SEIS TALLAS

Tailles / Tallas	6	8	10	12	14	16
Tailles Françaises	34	36	38	40	42	44
Tallas europeas	32	34	36	38	40	42
Poitrine / Busto	78	80	83	87	92	97
Taille / Cintura	58	61	64	67	71	76
Hanches / Caderas	83	85	88	92	97	102
Dos (encolure à Taille) / Espalda (escote a cintura)	39.5	40	40.5	41.5	42	42.5

A,B,C,D Doublure de la Poche et Parementure du Dos

A,B,C,D Forro del Bolsillo y Vista de la parte trasera

115cm*	0.60	0.60	0.60	0.70	0.70	0.70
Entoilage - 1.20m de 55cm à 64cm léger thermocollant tels que Pellon®						
Entretela - 1.20m de 55cm à 64cm légère adhésive como Pellon®						

A	115cm**	3.40	3.50	3.50	3.60	3.60	3.80
150cm**	2.20	2.30	2.60	2.80	2.80	2.90	"

B	115cm**	3.40	3.50	3.50	3.60	3.60	3.70
150cm**	2.20	2.20	2.30	2.30	2.30	2.40	"

C	115cm**	2.80	2.90	2.90	2.90	3.00	3.00
150cm**	1.80	1.80	1.90	1.90	1.90	2.00	"

D	115cm**	2.80	2.90	2.90	2.90	3.00	3.40
150cm**	2.00	2.10	2.40	2.40	2.40	2.50	"

TISSUS SUGGERES: Tissus réversibles seulement tels que: Tissus Bouclés, Microsuedine, Lainages, Molleton réversible, Molleton, Jersey Ponte. Prévoyez d'avantage de tissu pour raccorder les écosseis ou rayures.
MERCERIE: Fil.

TELAS SUGERIDAS: Telas reversibles solamente como: Telas Bouclé, Microgamuza, Mezclas de Lana, Muletón reversible, Muletón, Mallas Ponte. Se necesita tela adicional para casar cuadros o rayas.
MERCERIA: Hilo.

*sans sens **avec sens ***avec ou sans sens **sin pelusa ***con pelusa ****con o sin pelusa