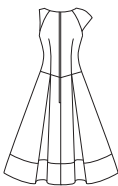


21 PIECES/PIEZAS

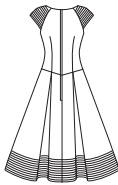
Métrages et instructions de couture en Français à l'intérieure de l'enveloppe.



A D



E B



C

MISSSES' SIX SIZES IN ONE

Sizes	8	10	12	14	16	18	
European Size	34	36	38	40	42	44	
Bust	31½	32½	34	36	38	40	In
Waist	24	25	26½	28	30	32	"
Hip	33½	34½	36	38	40	42	"
Back-neck to waist	15%	16	16%	16½	16%	17	In

A							
45***	1%	1%	1%	1%	1%	1%	Yd
60***	1%	1%	1%	1%	1½	1%	"

Interfacing- ⅝ yd. of 20" to 25" lightweight fusible

B,C							
45***	5½	5½	5%	5%	5%	5%	Yd
60***	4½	4½	4%	4%	4%	4%	"

A,B,C Lining- ½ yd. of 45***

D Bodice							
45***	1%	1%	1%	1%	1½	1½	Yd
60***	¾	¾	¾	1	1	1	"

Contrast Skirt

45***	1	1	1%	1%	1%	1%	Yd
60***	¾	¾	¾	¾	¾	¾	"

Interfacing- 1¼ yd. of 20" to 25" lightweight fusible

E							
45***	5%	5%	5%	6	6	6%	Yd
60***	4%	4%	4%	4½	4½	4%	"

Flower- ¼ yd. of 45" or 60***

B,C,E Interfacing- 2½ yd. of 36" lightweight fusible

GARMENT MEASUREMENTS

A,B,C,D,E Bust	35	36	37½	39½	41½	43½	In
Finished back length from base of neck:							
A,D	37¾	38	38¾	38½	38¾	39	In
B,C,E	41¾	42	42¾	42½	42¾	43	"
A,D Width	37¾	38½	40	42	44	46	"

SUGGESTED FABRICS

Pique, Poplin, Lightweight Wool and Wool Blends, Jacquards, Brocade, Satin, Shantung, Taffeta. Allow extra fabric for matching plaids or stripes.

REQUIREMENTS

One 22" zipper, hook and eye, one pkg. of ½" wide single fold bias tape.

*without nap **with nap ***with or without nap

JEUNE FEMME: PATRON SIX TAILLES

Tailles	8	10	12	14	16	18	
Tailles Françaises	36	38	40	42	44	46	
Poitrine	80	83	87	92	97	102	cm
Taille	61	64	67	71	76	81	"
Hanches	85	88	92	97	102	107	"
Dos (encolure à Taille)	40	40.5	41.5	42	42.5	43	cm

A							
115cm**	1.60	1.60	1.70	1.70	1.70	1.80	m
150cm**	1.30	1.30	1.30	1.30	1.30	1.30	"

Entoilage- 0.60m de 51cm à 64cm, léger, thermocollant

B,C							
115cm**	5.00	5.00	5.10	5.20	5.20	5.30	m
150cm**	4.10	4.10	4.10	4.20	4.20	4.20	"

A,B,C Doublure- 0.50m de 115cm*

D Corsage							
115cm**	1.00	1.00	1.00	1.10	1.10	1.10	Yd
150cm**	0.80	0.80	0.80	0.90	0.90	0.90	"

Jupe Contrastante

115cm**	1.00	1.00	1.20	1.20	1.20	1.20	m
150cm**	0.70	0.70	0.70	0.70	0.70	0.70	"

Entoilage- 1.10m de 51cm à 64cm, léger, thermocollant

E							
115cm**	5.30	5.30	5.40	5.40	5.50	5.60	m
150cm**	4.20	4.20	4.20	4.30	4.30	4.40	"

Fleur- 0.20m de 115cm ou 150cm**

B,C,E Entoilage- 2.20m de 91.5cm, léger, thermocollant

MESURES DU VÊTEMENT

A,B,C,D,E Poitrine	89	91.5	95	100.5	106	111	cm
Longueur finie du dos depuis la base du cou:							
A,D	96	96.5	97	98	98.5	99	cm
B,C,E	106	107	107	108	109	110	"
A,D Largeur	95	98	102	107	112	117	"

TISSUS SUGGÉRÉS

Piqué, Popeline fine, Laine et Lainages légers, Damas, Brocart, Satin, Shantung, Taffetas. Prévoyez davantage de tissu pour raccorder les écossois ou les rayures.

MERCERIE

Une glissière de 55cm, une agrafe, un paquet de ruban de biais simple de 1.3cm de large.

*sans sens **avec sens ***avec ou sans sens

6094
 SIZE / TAILLE / TALLA
 U.S. 8-18
 FR. 36-46
 A EURO. 34-44